



RIPARIAN BUFFER
 LENGTH: 453 L.F.
 AREA: 0.60 ACRES
 25' WIDE RIPARIAN BUFFER
 (0.25 ACRES) (170 TREES)
 INVASIVE REMOVAL REQUIRED
 (TYPICAL)

RIPARIAN BUFFER
 LENGTH: 1000 L.F.
 AREA: 0.67 ACRES
 25' WIDE RIPARIAN BUFFER
 (0.57 ACRES) (390 TREES)
 INVASIVE REMOVAL REQUIRED
 (TYPICAL)

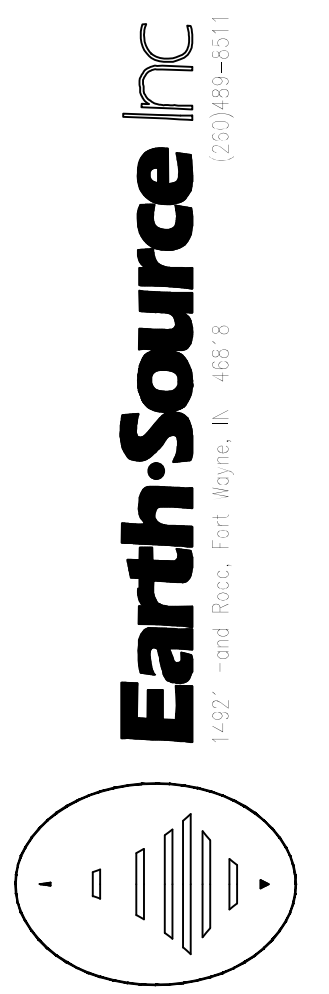
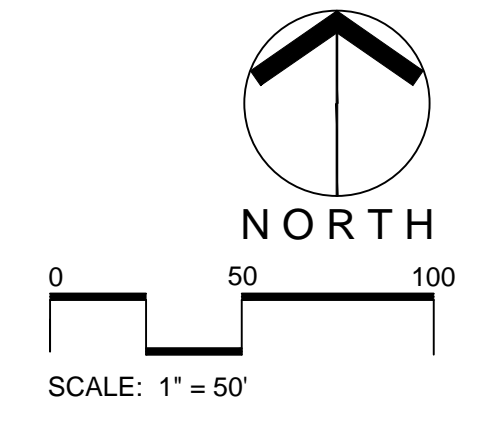
NEW HAVEN

MOSER PARK

Main St

West St

- Note:**
- 1) Work to begin at top of bank and continue upslope for a distance of 25'.
 - 2) Base plan information obtained from Allen County GIS and is for informational purposes only.



Save Maumee Riparian Buffer Initiative

Allen County, Indiana
 Trier Ditch Subwatershed

Riparian Planting Plan - Moser Park

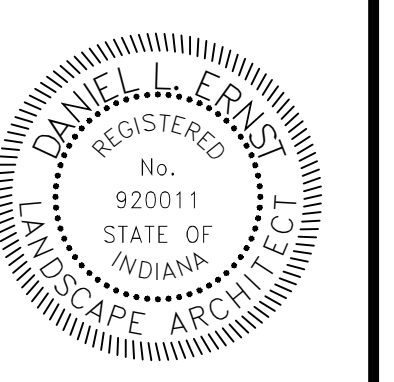
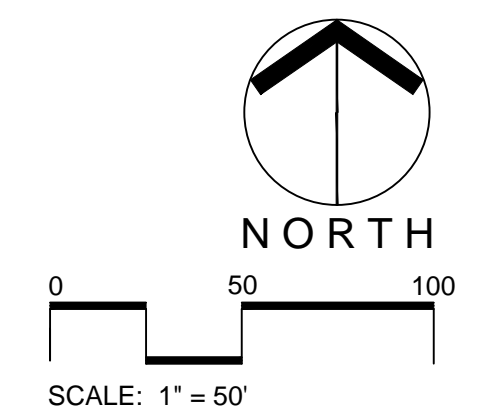


drawn by:	date:
DLE	3/14/17
checked by:	date:
revisions:	date:
file name:	
Planting Plan.dwg	
SHEET 1 of 4	

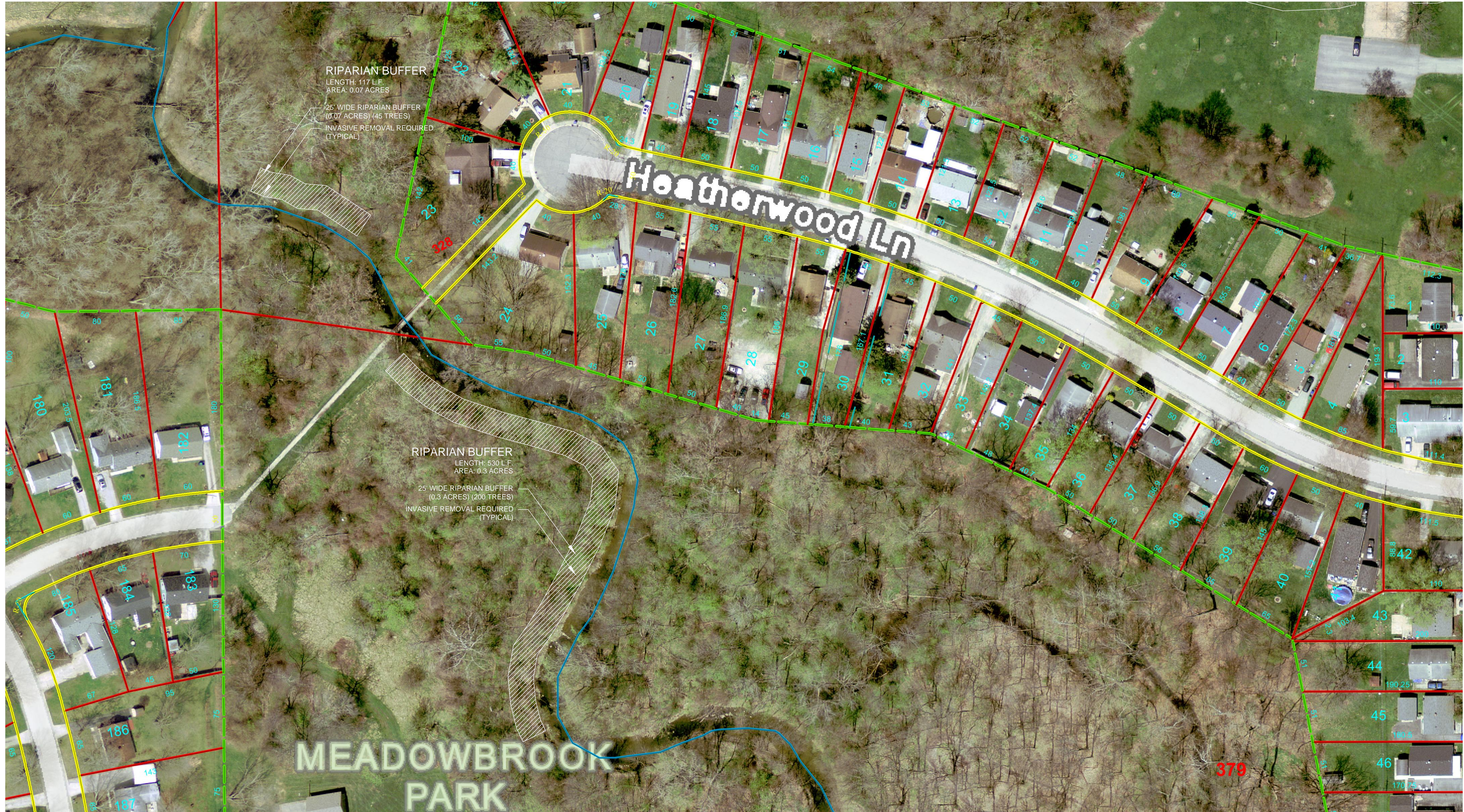


Note:

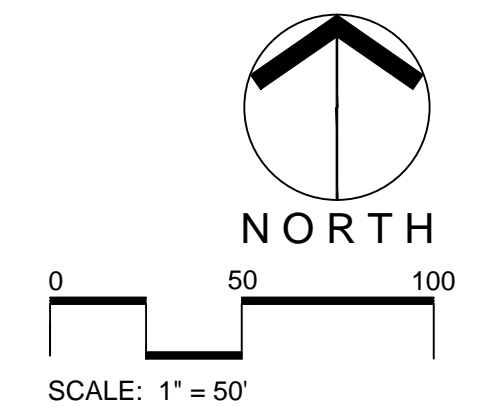
- 1) Work to begin at top of bank and continue upslope for a distance of 25'.
- 2) Base plan information obtained from Allen County GIS and is for informational purposes only.



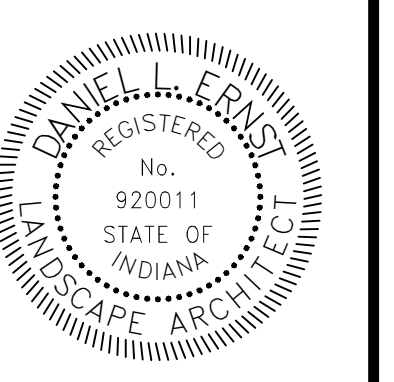
drawn by:	date:
DLE	3/14/17
checked by:	date:
revisions:	date:



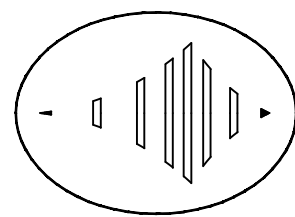
Note:
 1) Work to begin at top of bank and continue upslope for a distance of 25'.
 2) Base plan information obtained from Allen County GIS and is for informational purposes only.



Save Maumee Riparian Buffer Initiative
 Allen County, Indiana
 Trier Ditch Subwatershed
Riparian Planting Plan - Heatherwood Park South

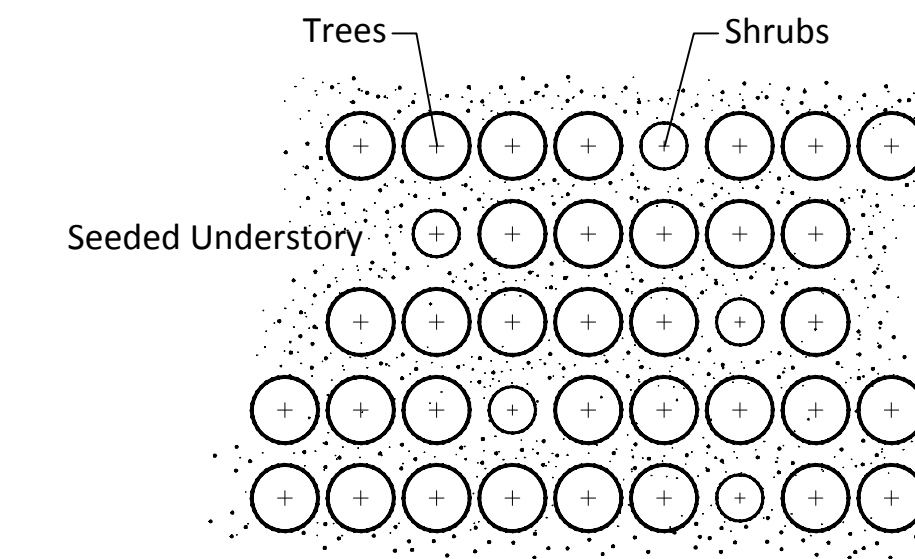


drawn by:	date:
DLE	3/14/17
checked by:	date:
revisions:	date:

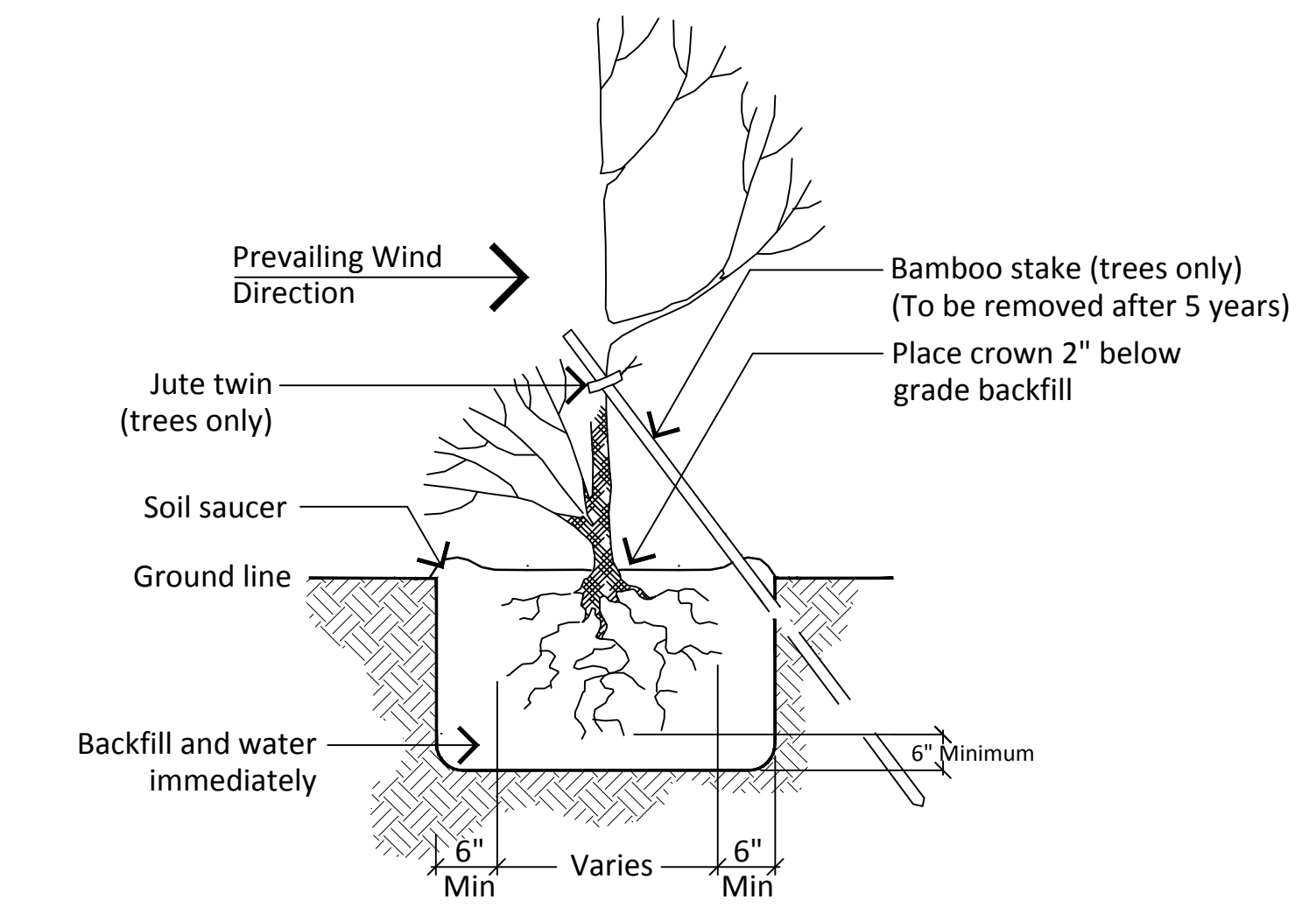


drawn by:	date:
DLE	3/14/17
checked by:	date:
revisions:	date:

file name:
 Planting Plan.dwg



2 TREE / SHRUB PLANTING LAYOUT
 Not to Scale



1 CONTAINER GROWN TREE/SHRUB INSTALLATION
 Not to Scale

PLANT LIST

Qty.	Scientific Name	Common Name	Size	Root	Spacing
1,100	trees				
	<i>Aesculus glabra</i>	Ohio Buckeye			
	<i>Betula nigra</i>	River Birch			
	<i>Carya ovata</i>	Shagbark Hickory			
	<i>Celtis occidentalis</i>	Common Hackberry			
	<i>Platanus occidentalis</i>	American Sycamore			
	<i>Quercus macrocarpa</i>	Burr Oak			
	<i>Quercus shumardii</i>	Shumard Oak			
	<i>Acer negundo</i>	Ash-Leaved Maple			
	<i>Populus tremula</i>	Aspen			
	shrubs				
	<i>Cornus racemosa</i>	Gray Dogwood			
	<i>Cornus amomum</i>	Silky Dogwood			
	<i>Lindera benzoin</i>	Spicebush			
<i>Viburnum dentatum</i>	Arrowwood Viburnum				
<i>Physocarpus opulifolius</i>	Atlantic Nine Bark				

Note: Select a minimum of 12 of the 14 species from the list above.
 A minimum of 75% trees recommended.