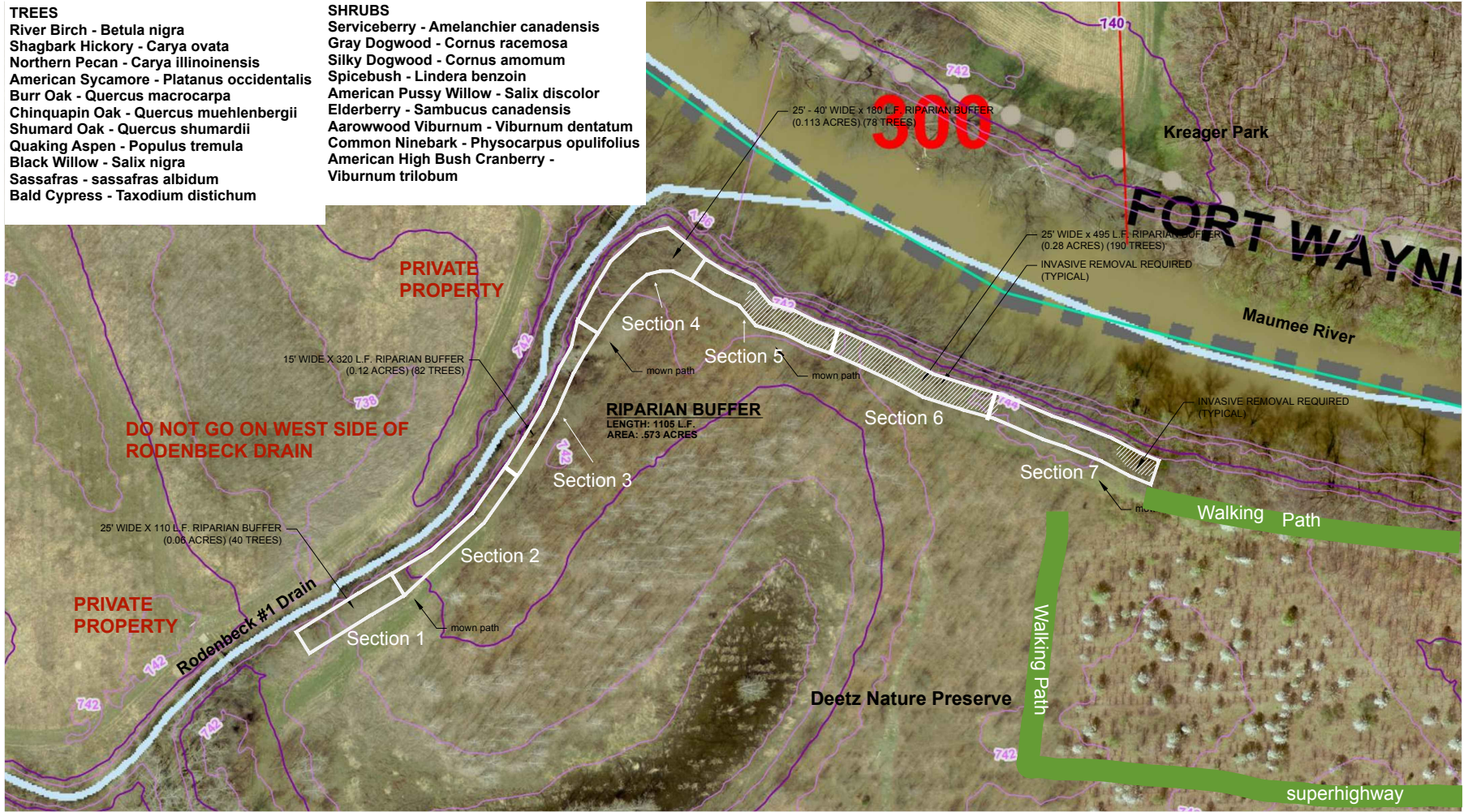


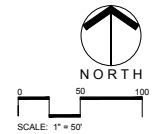
- TREES**
- River Birch - *Betula nigra*
 - Shagbark Hickory - *Carya ovata*
 - Northern Pecan - *Carya illinoensis*
 - American Sycamore - *Platanus occidentalis*
 - Burr Oak - *Quercus macrocarpa*
 - Chinquapin Oak - *Quercus muehlenbergii*
 - Shumard Oak - *Quercus shumardii*
 - Quaking Aspen - *Populus tremula*
 - Black Willow - *Salix nigra*
 - Sassafras - *sassafras albidum*
 - Bald Cypress - *Taxodium distichum*

- SHRUBS**
- Serviceberry - *Amelanchier canadensis*
 - Gray Dogwood - *Cornus racemosa*
 - Silky Dogwood - *Cornus amomum*
 - Spicebush - *Lindera benzoin*
 - American Pussy Willow - *Salix discolor*
 - Elderberry - *Sambucus canadensis*
 - Aarowwood Viburnum - *Viburnum dentatum*
 - Common Ninebark - *Physocarpus opulifolius*
 - American High Bush Cranberry - *Viburnum trilobum*



Note:

- 1) Work to begin at top of bank and continue upslope for indicated distance.
- 2) Base plan information obtained from Allen County GIS and is for informational purposes only.



drawn by:	DLE	date:	8/29/17
checked by:		date:	
revisions:		date:	
file name:	Planting Plan.dwg		