

THE MAUMEE RIVER

- THE GREAT LAKES LARGEST WATERSHED
- DRAINS 6,354 SQUARE MILES
- GREAT LAKES' MOST BIOLOGICALLY PRODUCTIVE RIVER
- MAJOR WALLEYE SPAWNING
- UP TO 80% OF A STREAM'S WATER QUALITY IS INHERITED AT ITS HEADWATERS. THE WATERS OF THE MAUMEE, AND ITS TRIBUTARIES, PLAY A CRUCIAL ROLE IN THE QUALITY OF THE ENTIRE LAKE ERIE WATERSHED.
- BEGINS AT THE CONFLUENCE OF THE ST. JOSEPH AND ST. MARYS RIVERS
- OUTLETS INTO THE MAUMEE BAY IN WESTERN LAKE ERIE



SAVE MAUMEE

- DRINKING WATER FOR 11 MILLION
- MORE CONSUMABLE FISH THAN ALL THE OTHER GREAT LAKES COMBINED
- PROVIDING 100,000 JOBS & BILLIONS OF DOLLARS TO THE ECONOMY

Save Maumee Grassroots Org
800 Glasgow Ave. 2nd Floor
Fort Wayne, IN 46803

260.417.2500

SaveMaumee.Org
Abby@SaveMaumee.Org

Save Maumee received
"Organization of the Year 2011"
award by Hoosier Environmental
Council, based on outstanding envi-
ronmental nonprofit organizations
from around Indiana.

Save Maumee has been chosen to
represent northeast Indiana water-
ways, on Capitol Hill, from 2008 to
2014, for Washington D.C.'s
Great Lakes Days during
Clean Water Week.

SAVE MAUMEE

Our Purpose

To preserve, protect and improve the ecosystems of the Upper Maumee River and Watershed by increasing public awareness through advocacy, collaboration, education and hands-on projects.



SINCE 2005 SAVE MAUMEE GRASSROOTS ORG.
AND OUR 100% VOLUNTEER EFFORTS HAVE:

- Removed over 12 tons of trash (26,000 lbs.) from Fort Wayne's three rivers & many feeder streams
- Planted over 2,000 native trees
- Planted approx. 900 lbs. of DNR approved native riparian seed
- Installed over 16,000 sq. ft. of erosion control mats that biodegrade in 4 years
- Harvested 76 lbs. of native, riparian seed to plant on local riverbanks
- Set the example of effective ways to help with the #1 pollutant in our waterways—sedimentation & erosion by organizing shovel-ready projects, to promote restoration of natural areas.
- Raised awareness successfully!



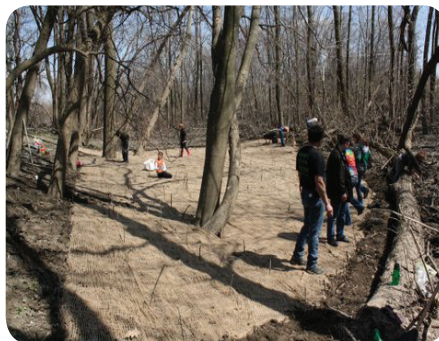
DEDICATED TO THE ECOSYSTEM

Save Maumee has been dedicated to raising awareness and facilitating ecosystem restoration projects to improve OUR waterways and those downstream. Research began in 2001 and our restoration projects began in 2005. Save Maumee Grassroots Organization Inc. operates as a charitable, nonprofit organization and filed with the IRS, as a 501 (c) (3) in December 2013. Our work since 2005 since 2005 has been a 100% volunteer organization.

JOIN US

Save Maumee MONTHLY meetings are the 1st Monday of every month from 7-8:30pm at Hall's Gas House located at 305 E. Superior Street, Fort Wayne, IN 46802.

MEETINGS ARE OPEN TO PUBLIC
free coffee and tea provided.



MEMBERSHIP FORM FOR

SAVE MAUMEE GRASSROOTS ORGANIZATION

Print Name: _____

Address: _____

City: _____

State, Zip: _____

Phone: _____

Email: _____

Memberships

One-time Supporter \$15.00 _____

Students and Seniors Annual \$10.00 _____

Individual Annual Membership \$25.00 _____

Family Annual Membership \$40.00 _____

Business/Organization Annual \$100.00 _____

Contributions:

Periodic Sustainers Pledge \$ _____ /month

One time contribution \$ _____

Total Enclosed: \$ _____

Northeast Indiana is an extremely important area because it sits atop 6 drainage basins. These 6 watersheds affect not only Indiana waters, but have the potential to harm or improve water quality from the Gulf of Mexico (via the Wabash, Ohio, Mississippi Rivers) to the Great Lakes (via the Maumee to Lake Erie).

All three rivers in Fort Wayne remain on the 303(d) List of Impaired Waterways because they fail to meet minimum standards set by the Clean Water Act.

The Maumee river contributes more than 40% of the phosphorus and 50% of the sediment spoiling Lake Erie.