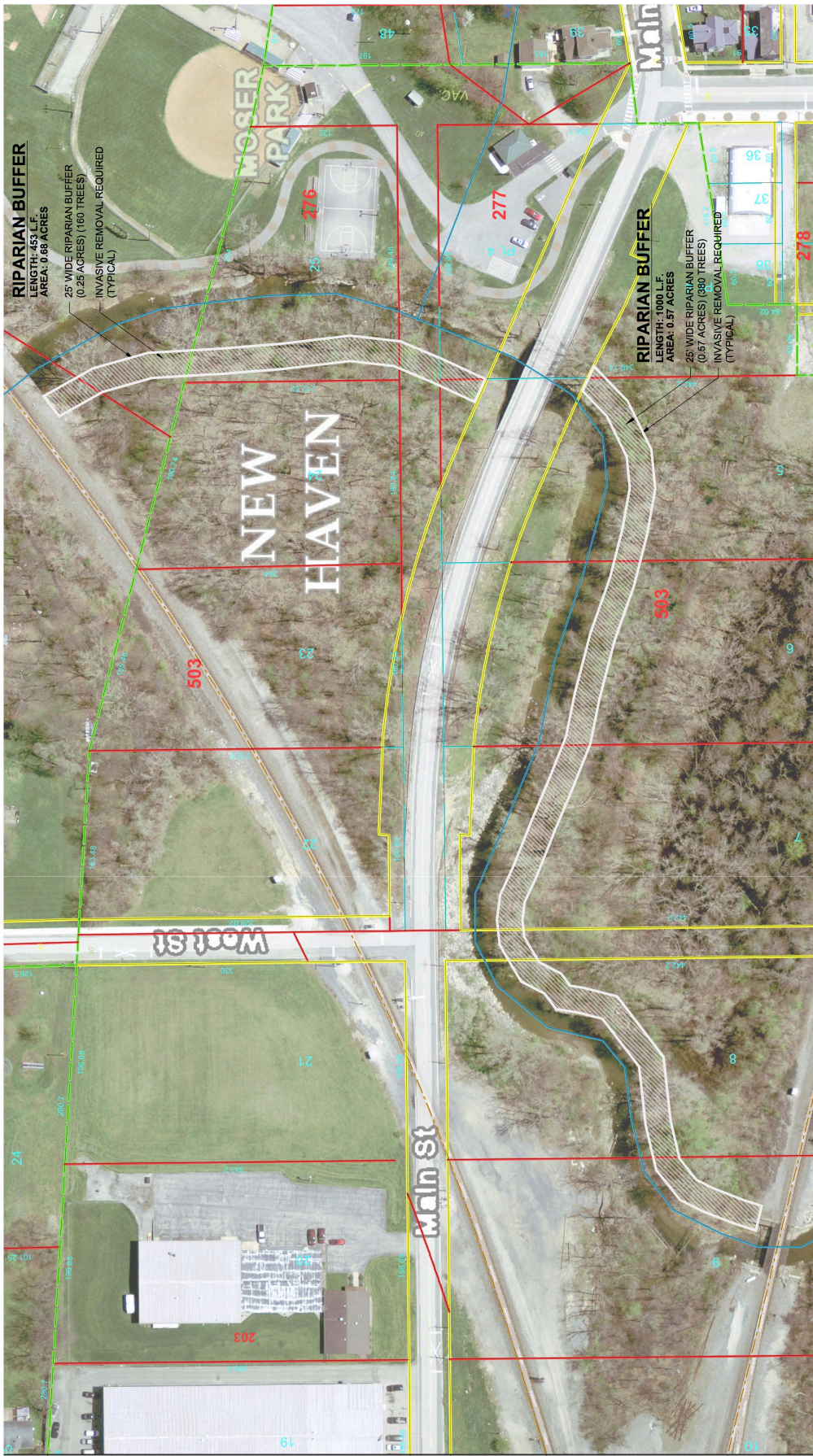




Save Maumee Riparian Buffer Initiative  
Trier Ditch Subwatershed  
Allen County, Indiana  
Riparian Planting Plan - Moser Park



Drawn By:	DLE	Date:	3/14/17
Checked By:	DLE	Drawn By:	DLE
Reviewed By:	DLE	Date:	5/22/17
Project Name:	Riparian Planting		



- Note:**
- 1) Work to begin at top of bank and continue upslope for a distance of 25'.
  - 2) Base plan information obtained from Allen County GIS and is for informational purposes only.