

Save Maumee Grassroots Organization



presents

The Maumee Matters Earth WEEK 2014

April 18 through April 26
2014

...because one day is just not long enough



Everything Water: The Maumee Matters

Earth Week 2014



141 Miles

April 18 through April 26

Entire length of the Maumee River starting at the Continental Divide

Cast Off: Continental Divide separating Great Lakes & Mississippi Watersheds

Destination: Mouth of the Maumee River ~ Maumee Bay

9 Days

Canoe trip for the hard-core members...or BYOC for a day or 8!

8 Evenings

Create programming opportunities for *beachcombers* to join us at our land locations

2 States

Watershed Divide in Fort Wayne, Indiana to the mouth in Maumee Bay in Lake Erie



#1 Goal: GPS/GIS Mapping

- To assist the Upper Maumee Watershed Management Plan with intent to help implement the WMP which is due out to the public in April 2014
- Coordinating assistance with Indiana University / Purdue University Fort Wayne and Upper Maumee Watershed Partnership
- Assist in solidifying GPS coordinates of straight-pipe drainage areas that appear unmapped on any State or County System. (i.e. tiles, pipes, bank erosion identification, potential areas for “boat launching” & large debris mapping)

Goal #2 Provide a destination for public outreach & education

Provide the stage for public programming

- 1) to highlight BMP's, successes for water quality & challenges faced
 - 2) to provide an opportunity for experts to present information in-the(ir)-field;
 - * to provide feedback, answer questions, encourage discussion and weigh-in-on complicated issues, rulings & law
 - 3) Encourage stakeholders in the Maumee Watershed to visit another area along our waterways ~ (re) create the love of water
- Identified as a need for many government and nonprofit groups



Goal #3

Highlight U.S. ACE current practice indiscriminate removal of vegetation - 15ft on both sides of all levees in the U.S.

“Guidelines for landscape planting and vegetation management at levees, floodwalls, embankment dams and appurtenant structures”

(ETL 1110-2-571)

Why Save the Maumee?

- Largest Watershed to the entire Great Lakes Basin
- The confluence of the St. Joseph & St. Marys Rivers create the Maumee in downtown Fort Wayne, IN
- Remains on the 303(d) list of impaired waters

...and Abby bought a house on the Maumee in 2000...





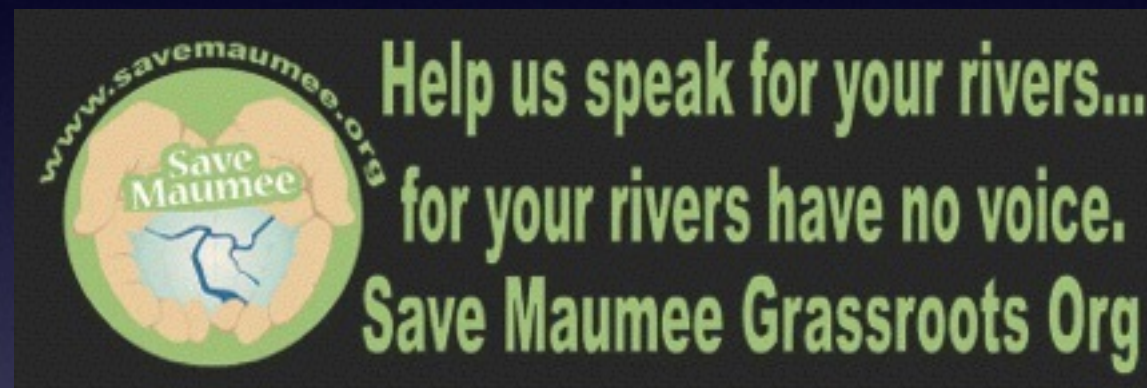
ALL ON 100% VOLUNTEER HOURS



- Research began in 2001
- Save Maumee projects began in 2005
 - * 9th Annual Earth Day (since 2005)
 - * 8th Annual Canoe Clean-Up, Can YOU Clean-Up (since 2006)
 - * 7th Annual Seed Harvest (since 2007)
 - * Summer Monthly Eco-Walks (began in 2012)
- 501 (c) 3 nonprofit filed with the IRS in December 2013

04/19/2009

Purpose of Save Maumee Grassroots
Organization is to preserve, protect and improve
the ecosystems of the Upper Maumee River



...& Maumee Watershed by increasing public
awareness through advocacy, collaboration,
education and hands-on projects.



SUCCESS TO DATE

- Planted over 900 lbs of native DNR approved riparian seed



and hundreds
of *plant plugs*



SUCCESS TO DATE

- Planted over 2,000 trees along public riparian areas



many are fruit
and berry bearing



SUCCESS TO DATE

Installed over 16,000 sq. ft.
of GeoJute Mats

erosion control mats hold seed
down when “violent riverbank
flooding” occurs



...and removed over 26,200 pounds of river rubbish
in & around Fort Wayne's Rivers





SUCCESS TO DATE

- continue to engage hundreds of unpaid participants
- encourage science based research on local rivers and best management practices
- share the information in a public forum for educational purposes
- **Memberships keep our work 100% volunteer & community based**





Save Maumee: Dana Jinx 2011



Committee Countdown to APRIL 17, 2014

Everything Water:
The Maumee Matters Earth Week

- 1) Safety Plan / Medic Crew
- 2) Programing
- 3) Marketing
- 4) Food & Water
- 5) Finance / FunRaising
- 6) Film Production



How are we advertising the trip?

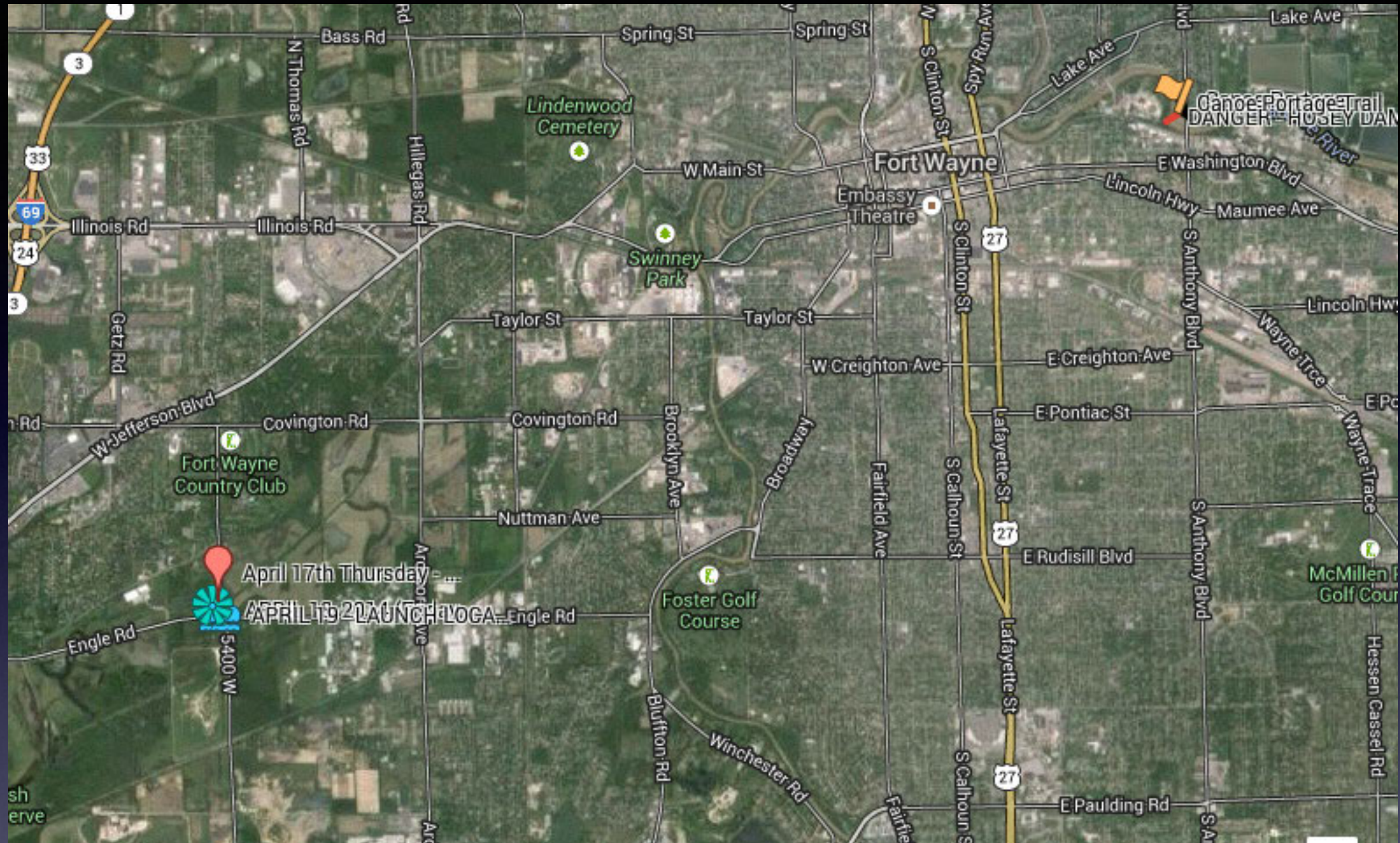
- NewsCenter 33 is to broadcast from the river
- Documentarian crew to assist in taking a “snapshot” of the Maumee; stories, problems, solutions, questions
- List of over 8,000 emails collected from our work, will be sent
- Marcus Demery ~ Writer ~ will be capturing questions from participants for discussions

Significance of Launching Point



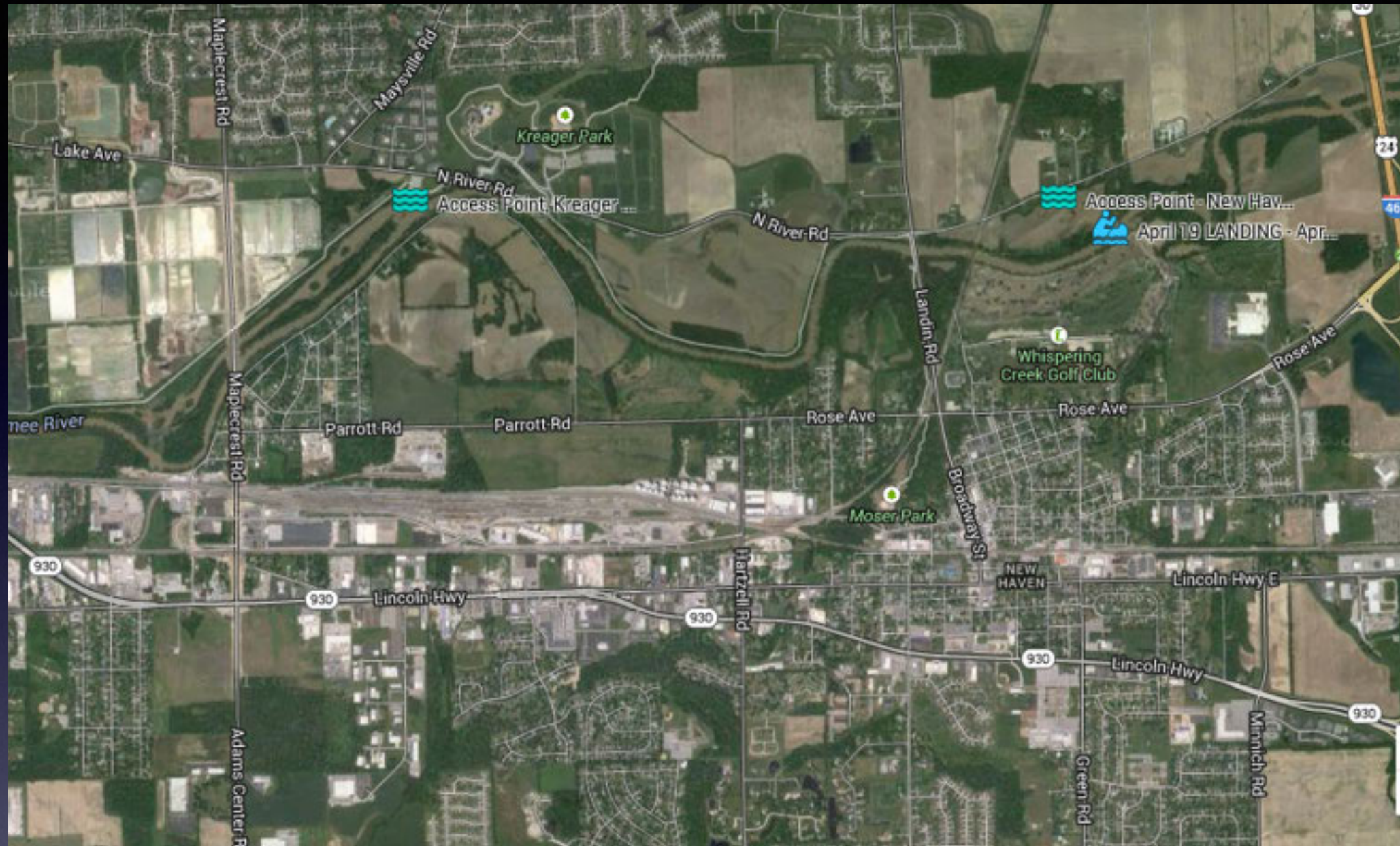
Continental Divide
between the
Mississippi
&
Great Lakes
Watershed

- Where the dreaded Silver Asian Carp have an opportunity to enter the Great Lakes via Eagle Marsh/St. Marys to the Maumee.
- Draw attention to the importance of invasive species crossing boundaries and the effects that invasives have on commerce.



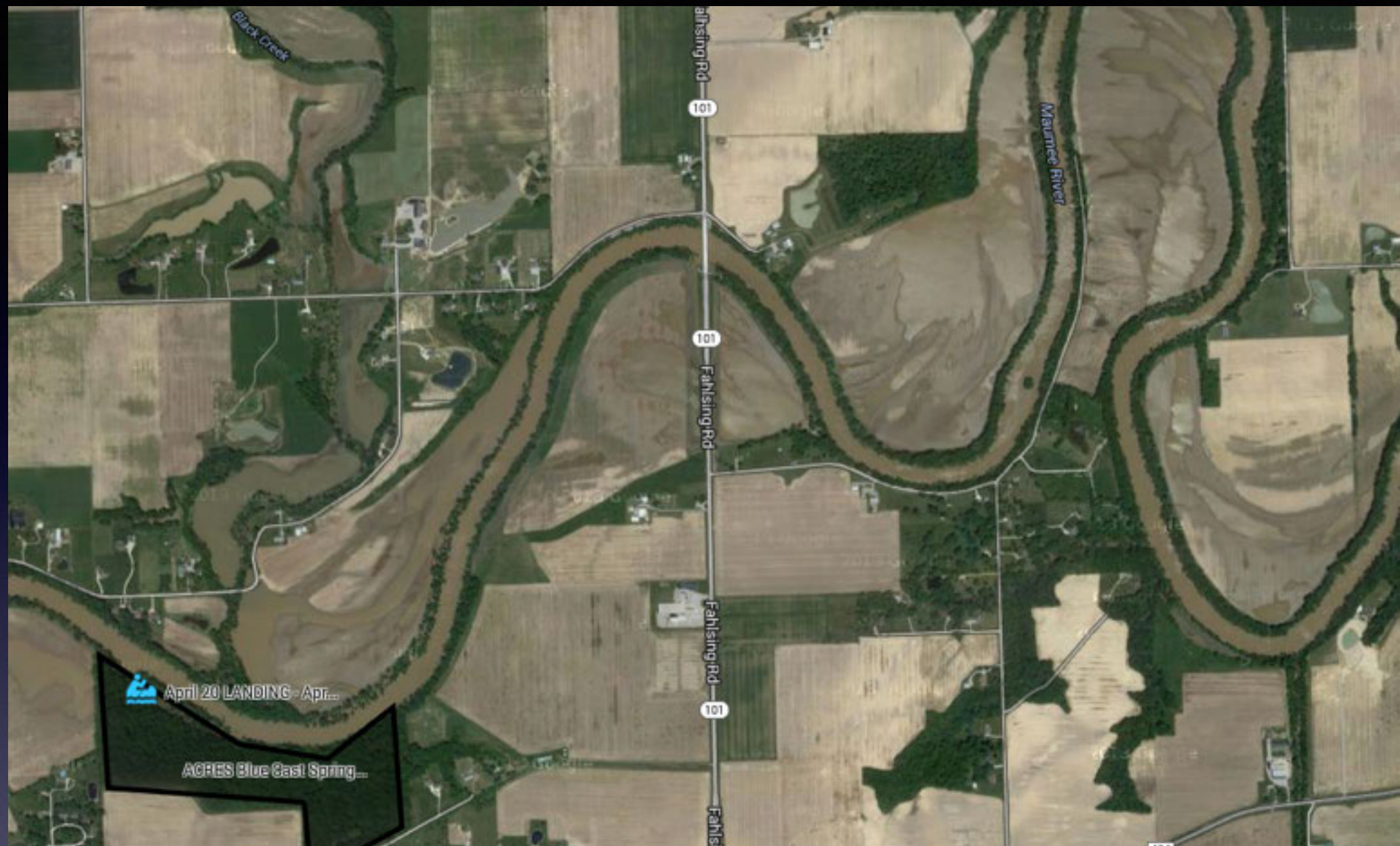
April 19th (SATURDAY)

Launch from Top Notch Tree Service 9am
portage and drop heavy supplies at PORTAGE over
Hosey Dam



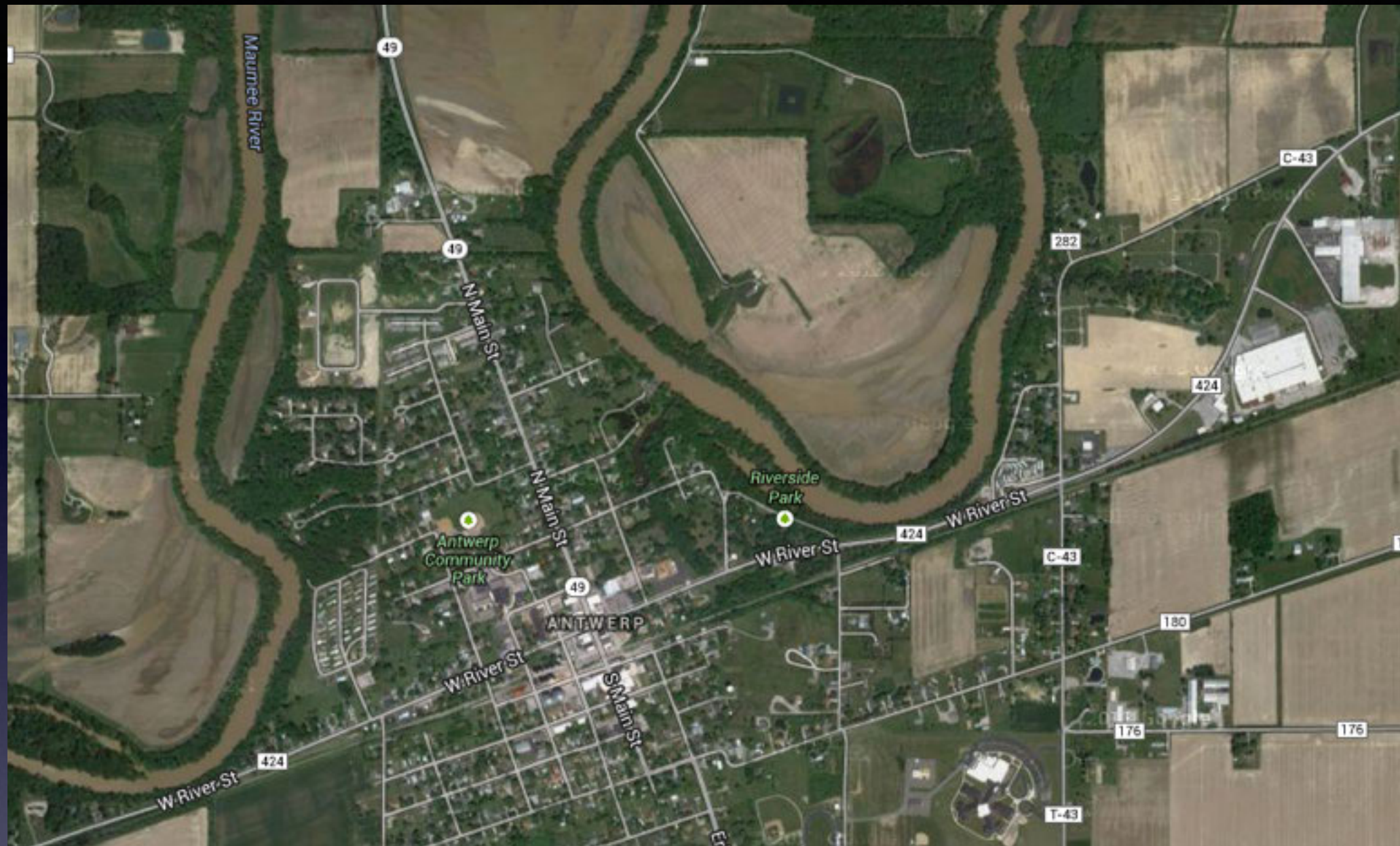
April 19 Saturday Landing Programing Area

New Haven North River Nature Area
New Haven, Indiana

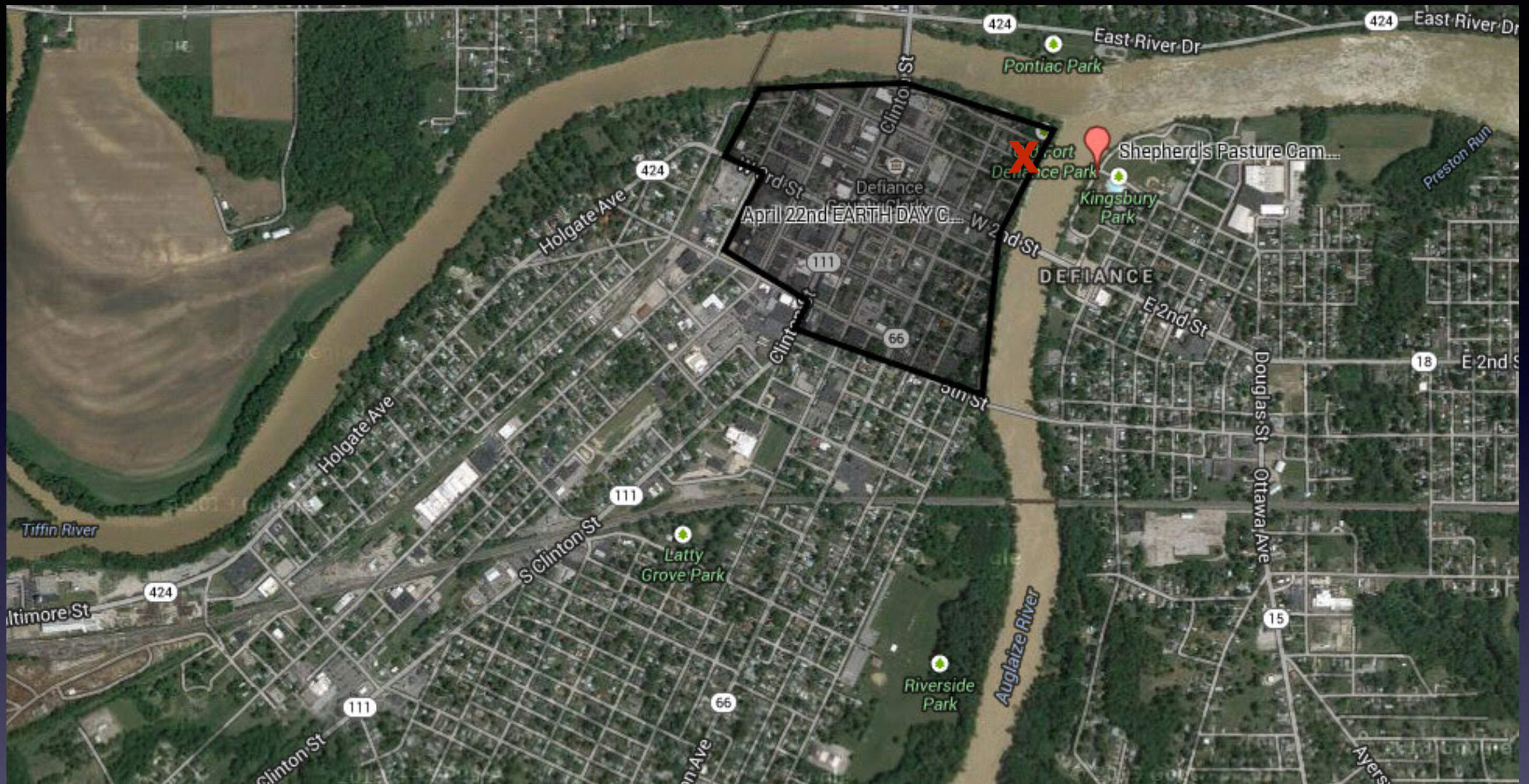


April 20 Easter Sunday Landing Programing Area

ACRES Blue Cast Springs

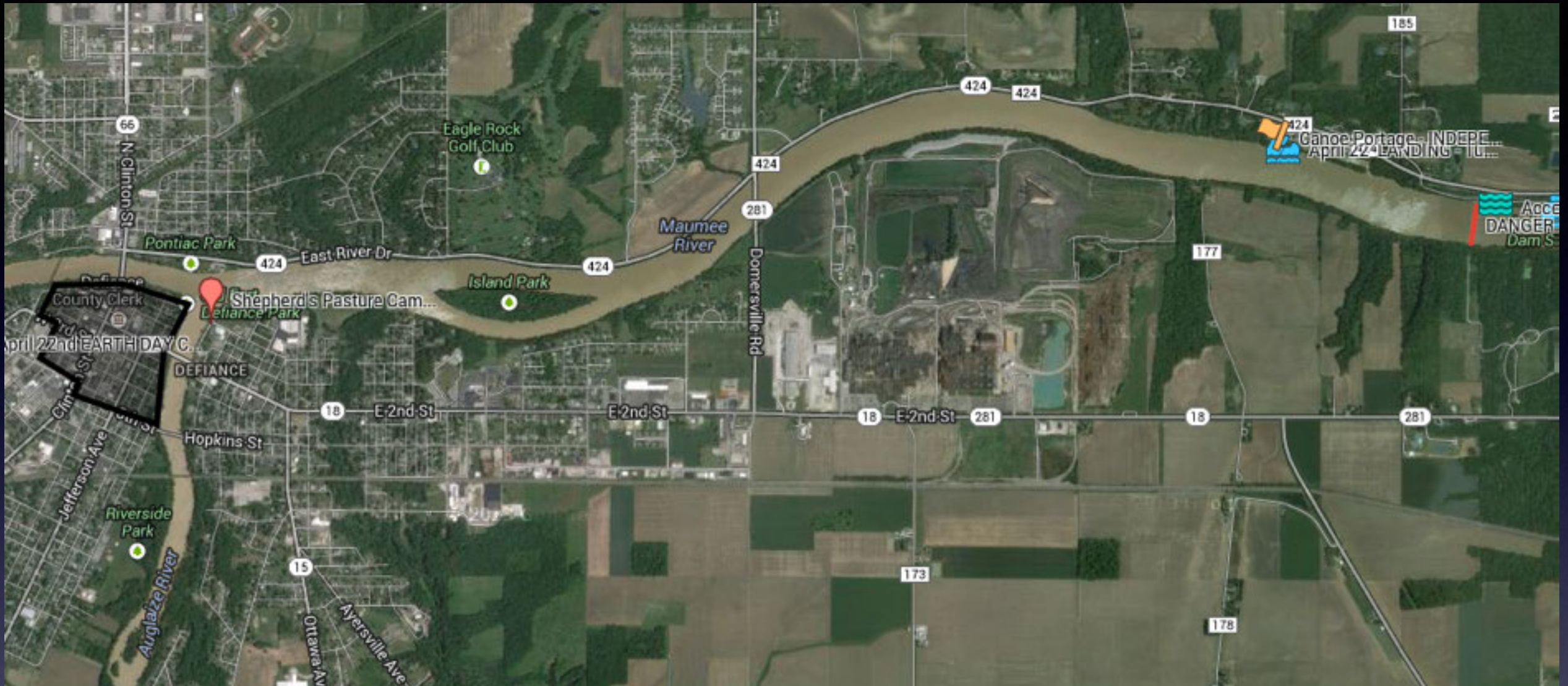


April 21st ~ Monday
Programing Area
Riverside Park Antwerp, OH



PROGRAMING AREA on April 22

Tuesday Earth Day Celebrations HERE! Dock boats at
Old Fort Defiance Park, Defiance Ohio!



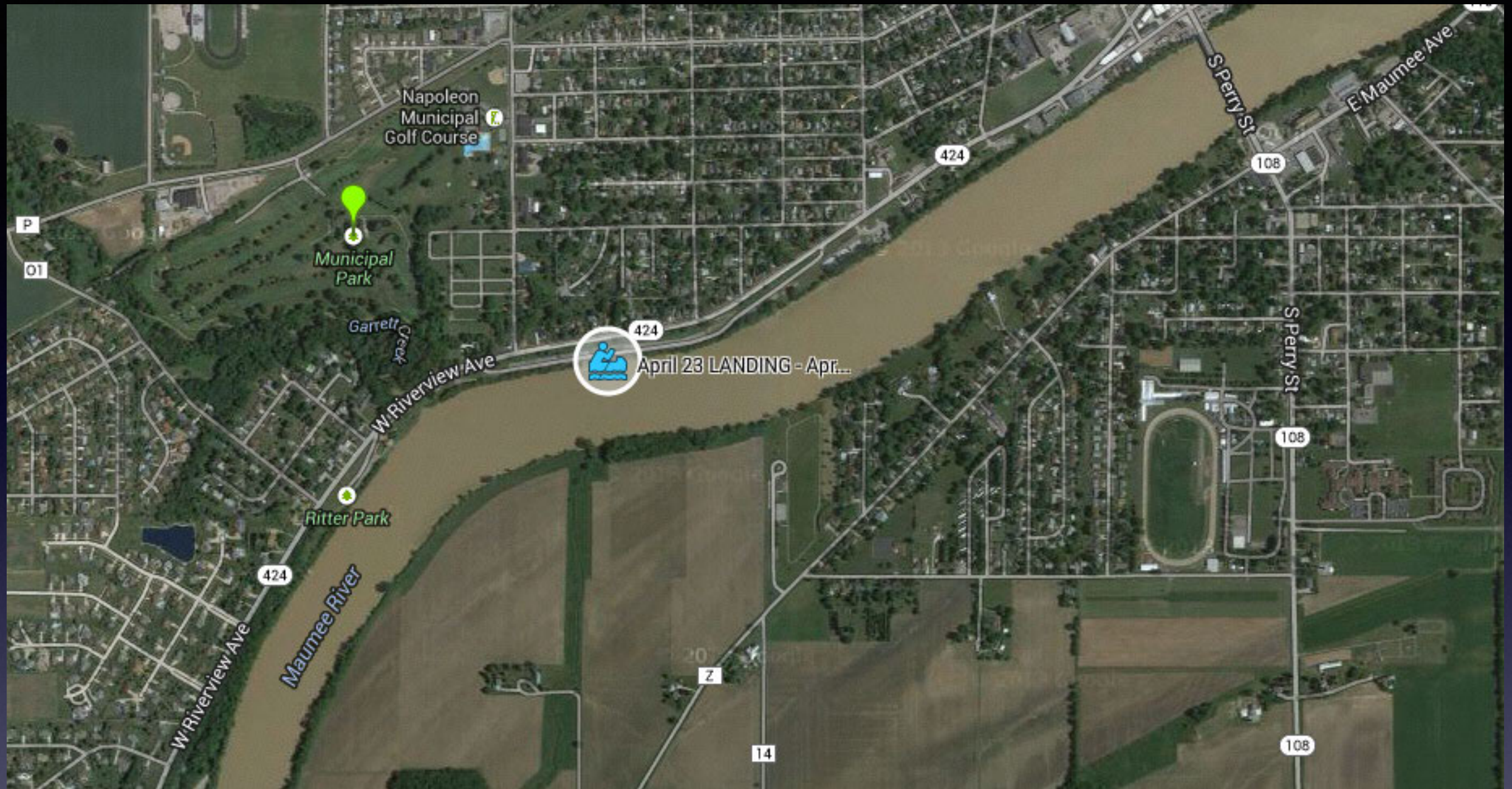
April 22 (Tuesday) Landing
above Independence Dam
GO to Earth Day Celebrations then grab your buddy
boat and PORTAGE your canoes to the campsite



Haul boats by land...OR YOU MUST TAKE BUDDY
BOAT to camp after hand-portage

Canoe Portage from Independence Dam Boat Launch to
private property at
869 Coon Hallow Drive Napoleon, OH 43545

CAMPERS / CANOERS MUST BE AT CAMP BEFORE DARK
~April 22 Earth Day Tuesday~



April 23 (Wed)
Programing Location
Napoleon Municipal Park
Napoleon, Ohio



WE WILL REASSESS RIVER CONDITIONS HERE:

April 24 Thursday Landing

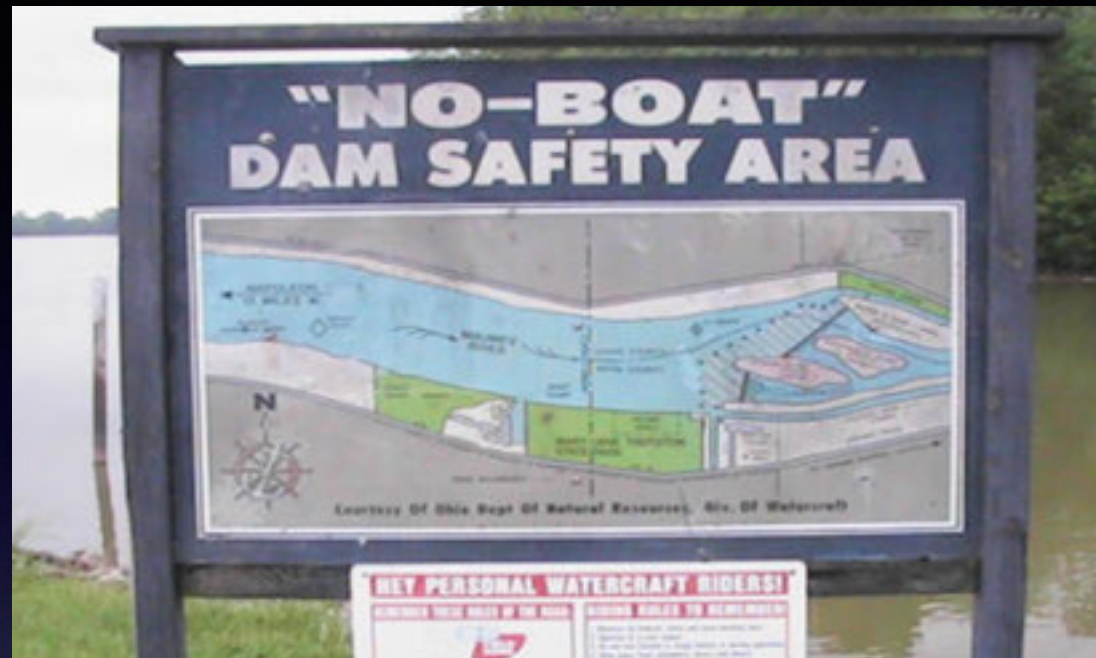
Programing Camp Area

Mary Jane Thurston State Park

Riverbank restoration project with ODNR & Reassessing
water conditions

April 25

CAMP & INFO LOCATION ALL DAY



On April 24, we will reach a democratic decision based on the Maumee River conditions, as to whether we launch or stay at Mary Jane Thurston



DANGEROUS RAPIDS COULD BE between Mary Jane
Thurston State Park & Perrysburg/Maumee due to
flooding

Waterville is the half-way point between Grand Rapids/
MJT and Perrysburg/Maumee

RAPIDS - POTENTIAL TO ...
April 24 LANDING - REA...

Mary Jane
Thurston
State Park

A satellite map of the Maumee River area in Maumee, Ohio. The Maumee River flows through the center of the image. Key locations marked include Fort Miami Elementary School, Audubon Islands Nature Preserve, Woodlands Park, Three Meadows Park, Side Cut Metropark, Orleans Park, and Buttonwood Betty C. Black Recreation Area. Major roads shown include I-190, I-475, I-75, and various state routes like 20, 24, 65, 75, 193, and 199. The map also shows the Ohio Turnpike (Toll road) and several local streets like River Rd, Gibbs St, and W Broadway St.

April 25
(Friday)

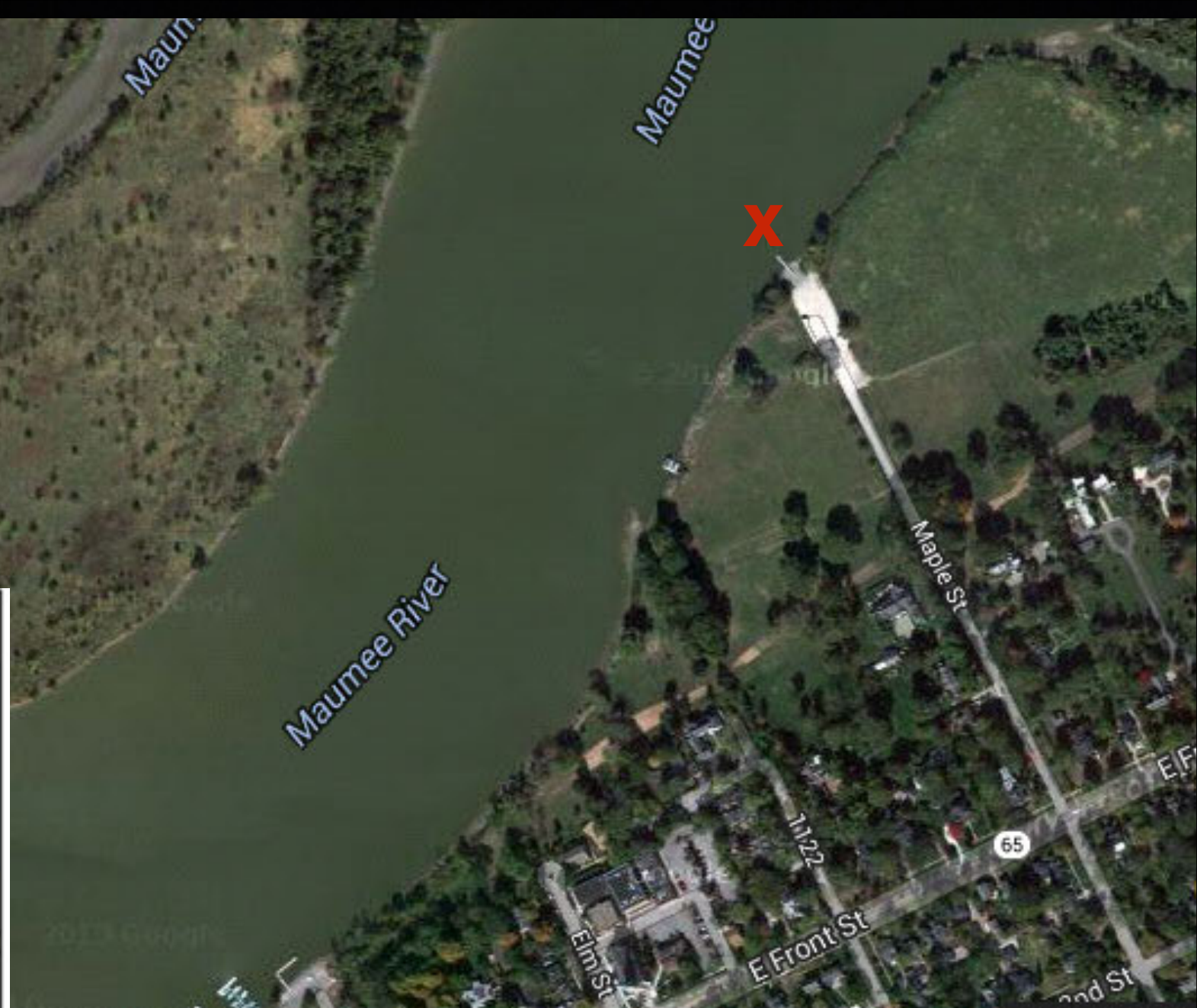
OPTION 1. EVERYONE stays at MJT and has a 2nd day of Programing Restoration work at MJT (canoes will be trailered but not moved)
BUT we may stage another educational area

OPTION 2. Canoe Crew may travel with Land Crew or decide to paddle to
Programing Location at
Blue Grass Island
or
Audubon Islands Nature Preserve

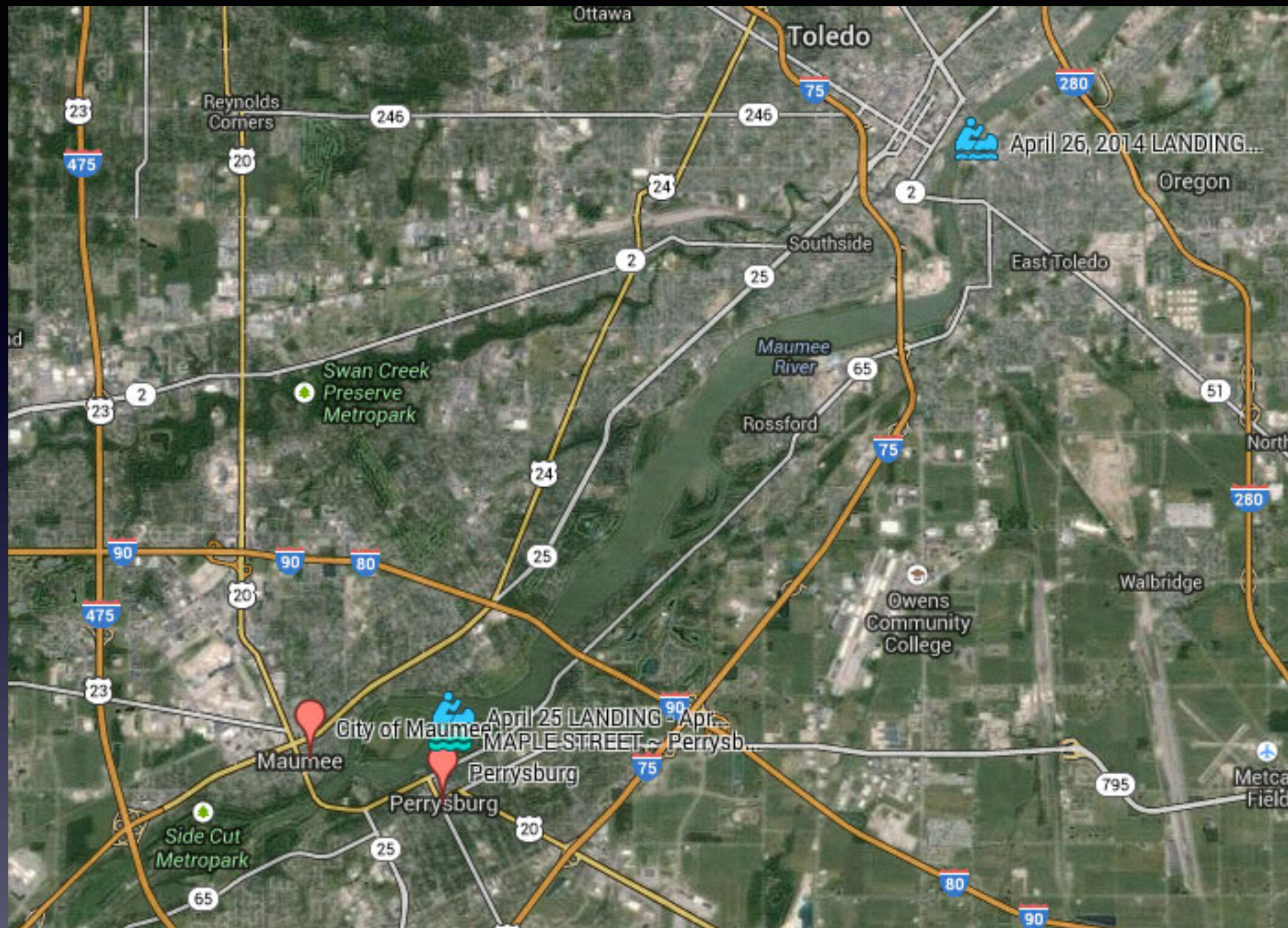
Saturday
April 26

Audubon Islands
Nature Preserve

Ewing Island

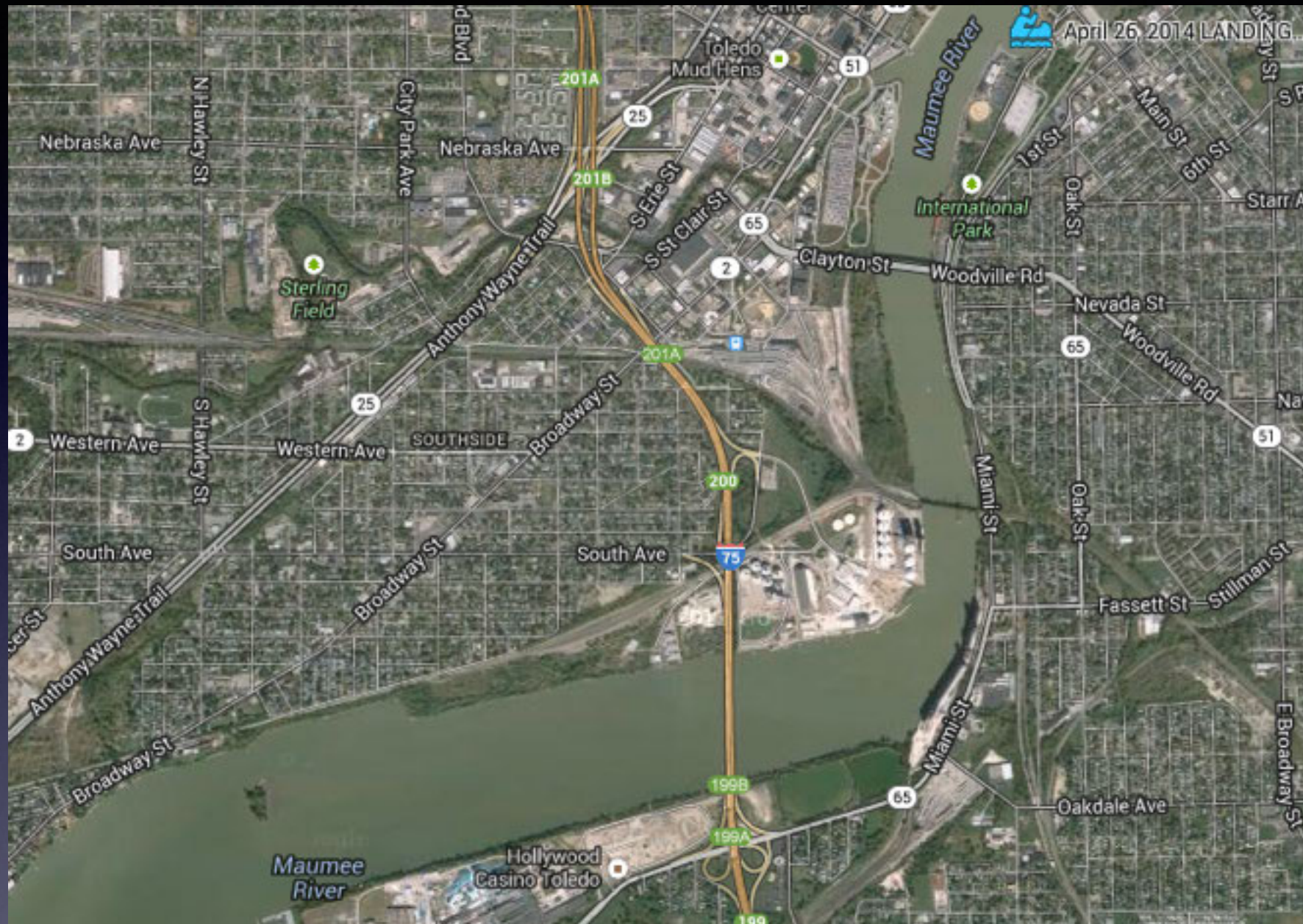


Portage ALL to Maple Street
Perrysburg, Ohio
Maple Street ends at the
Maumee River
Launching Point 9AM



Saturday April 26 Bring your own canoe
launch with us ~ 9AM

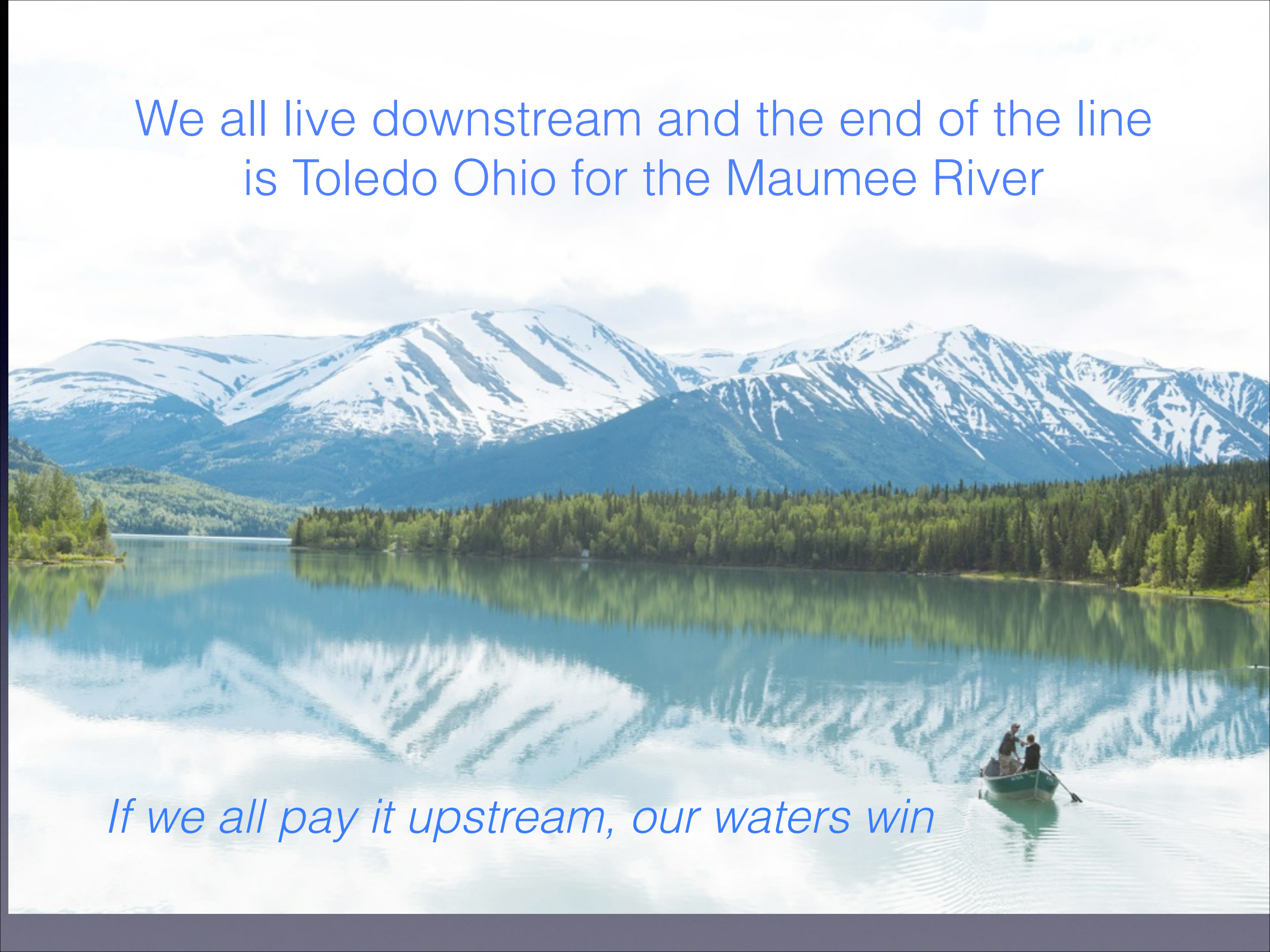
FROM Maple Street boat launch in Perrysburg, Ohio



International Park, Toledo Ohio
DESTINATION POINT REACHED SATURDAY
APRIL 26, 2014

We all live downstream and the end of the line
is Toledo Ohio for the Maumee River

If we all pay it upstream, our waters win



Why should you promote?

- promote your own local interests, heritage & community that surrounds our water

- encourages interest in education

notoriety

- promote your own success stories

- create community in your own community

- encourage commerce to surrounding towns & cities

- invite the community to your own promotions & destinations in the watershed

...the more the merrier

regional & specific

- encourages mutual cooperation between political boundaries, government & water related groups ~ watersheds do not recognize these political boundaries

Bottom Line _____

“The Great Lakes currently generate over 1.5 million jobs and \$60 billion in wages annually and provide the foundation for a \$30 billion tourism economy. Projections for implementing Great Lakes restoration strategy will generate over \$50 billion in long-term economic benefits.”

Great Lakes Commission, HOW, Great Lakes Fishery Commission,
Council of Great Lakes Industries Great Lakes Metro Chambers Coalition,
September 5, 2013

Historical Value

- Civilization began & centered around water
- Pass on lore to the next generation(s)
- Everyone has a story and natural love of water, we hope to capture this during the trip
- MANY historical sites to promote along the Maumee (Fort Meigs, General Anthony Wayne's Fort, Erie Canal)
- Waterways have historically been the heart of cities



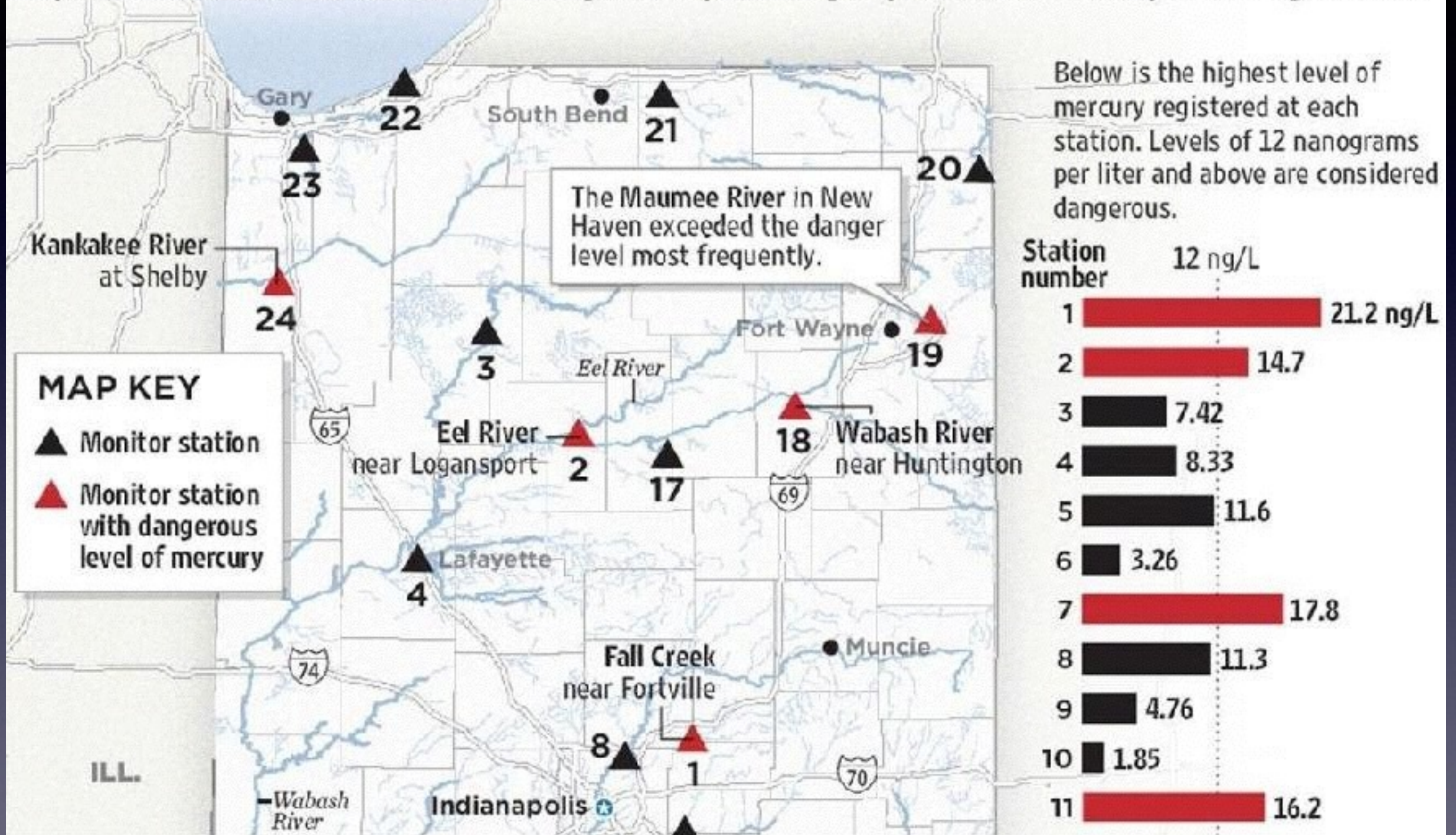


looking west from
Dr. Martin Luther King Jr. Bridge

Combined Sewer Overflows happen on average
71 times per year in Fort Wayne alone
&
have the potential to overflow with as little as
1/10 inch of precipitation or snow melt

HOOSIER STREAMS STILL HAVE HIGH LEVELS OF MERCURY

A study from August 2004 to September 2006 revealed high levels of mercury in at least one sample from 10 of the 25 areas monitored. More than 80 percent of the samples yielded some level of the toxic pollutant.



SUCCESS STORY

