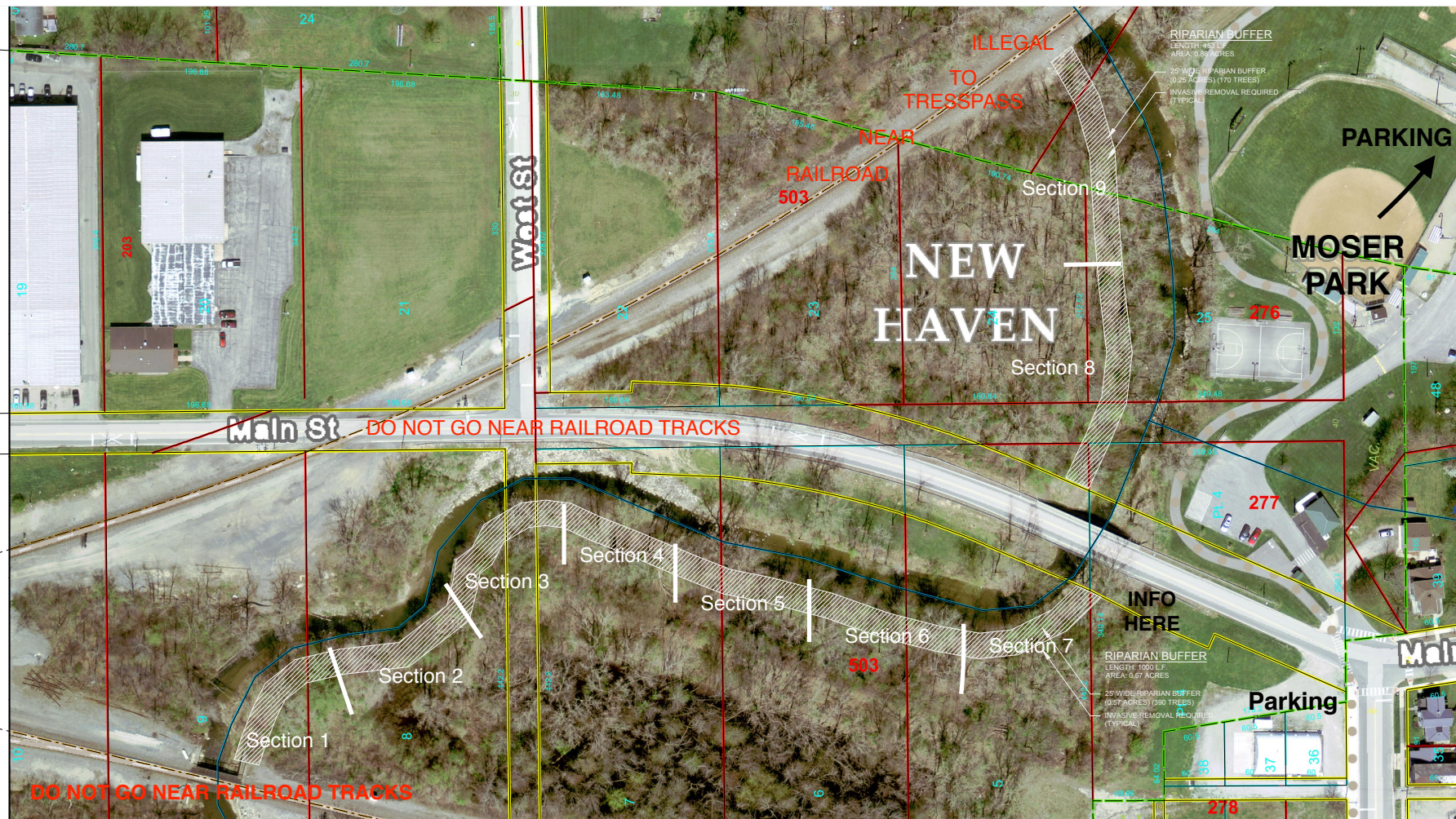
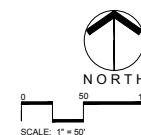


LOCATION: SATURDAY APRIL 22, 2017



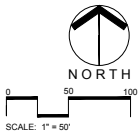
1) Work to begin at top of bank and continue upslope for a distance of 25'.
2) Base plan information obtained from Allen County GIS and is for informational purposes only.



LOCATION: FRIDAY APRIL 21 & SUNDAY APRIL 23



Note:
1) Work to begin at top of bank and continue upslope for a distance of 25'.
2) Base plan information obtained from Allen County GIS and is for informational purposes only.



Save Maumee Riparian Buffer Initiative
Allen County, Indiana
Trier Ditch Subwatershed - Moser Park
Riparian Planting Plan - Heatherwood Park North



drawn by:	date:
DLE	3/14/17
checked by:	date:
revisions:	date:

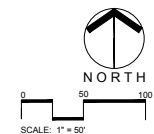
File name:
Planting Plan.dwg

LOCATION: FRIDAY APRIL 21, 2017



Note:

- 1) Work to begin at top of bank and continue upslope for a distance of 25'.
- 2) Base plan information obtained from Allen County GIS and is for informational purposes only.



EarthSource inc
1001 West Main Street, Suite 100
Bloomington, IN 47403



Save Maumee Riparian Buffer Initiative

Allen County, Indiana

Trier Ditch Subwatershed

Riparian Planting Plan - Heatherwood Park South



drawn by:	date:
DLE	3/14/17
checked by:	date:
revisions:	date:

File name:
Planting Plan.dwg

SHEET 3 of 4

Moser Park - 550 Trees to be delivered Tuesday, April 18
 Heatherwood Park - 550 Trees to be delivered Wednesday, April 19

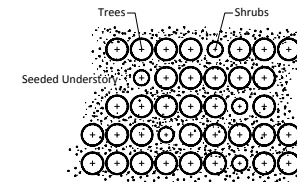
Trees

- Betula nigra - River birch - 3 gallon 3-4'
- Carya illinoensis - Northern pecan - 3 gallon 4-5'
- Carya ovata - Shagbark Hickory - 3 gallon 6-12"
- Celtis occidentalis - Hackberry - 3 gallon 3-5'
- Platanus occidentalis - Sycamore - 3 gallon 5-6'
- Populus tremuloides - Quaking Aspen - 5 gallon 4-5'
- Quercus bicolor - Swamp White oak - 5 gallon 5-6'
- Quercus macrocarpa - Bur oak - 3 gallon 3-4'
- Quercus muehlenbergii - Chinquapin oak - 3 gallon 5-6'
- Quercus shumardii - Shumard oak - 3 gallon 2-3'
- Salix nigra - Black willow - 3 gallon
- Sassafras albidum - Sassafras - 3 gallon 2-3'
- Taxodium distichum - Bald cypress - 3 gallon 5-6'

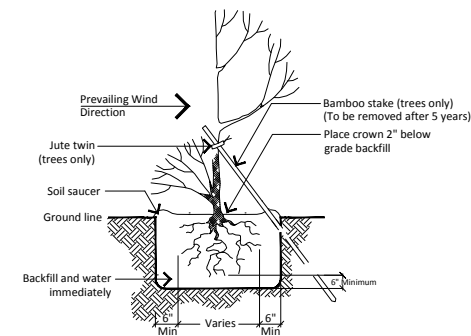
Shrubs

- Cornus racemosa - Grey Dogwood - 3 gallon 3-4'
- Cornus amomum - Silky dogwood - 3 gallon 4-5'
- Lindera benzoin - Spicebush - 3 gallon 2-3'
- Physocarpus opulifolius - Common Ninebark - 3 gallon
- Salix discolor - Pussy Willow - 3 gallon 2-3'
- Viburnum dentatum - Arrowwood Viburnum - 3 gallon 3-4'

19 species = 1,100 native DNR approved trees



2 TREE / SHRUB PLANTING LAYOUT
 Not to Scale



1 CONTAINER GROWN TREE/SHRUB INSTALLATION
 Not to Scale

PLANT LIST

Qty.	Scientific Name	Common Name	Size	Root	Spacing
1,100	trees				
	Aesculus glabra	Ohio Buckeye			
	Betula nigra	River Birch			
	Carya ovata	Shagbark Hickory			
	Celtis occidentalis	Common Hackberry			
	Platanus occidentalis	American Sycamore			
	Quercus macrocarpa	Burr Oak			
	Quercus shumardii	Shumard Oak			
	Acer negundo	Ash-Leaved Maple			
	Populus tremula	Aspen			
	shrubs				
	Cornus racemosa	Gray Dogwood			
	Cornus amomum	Silky Dogwood			
	Lindera benzoin	Spicebush			

Not available this Spring

Not recommended by the DNR

Note: Select a minimum of 12 of the 14 species from the list above.
 A minimum of 75% trees recommended.



drawn by:	date:
DLE	3/14/17
checked by:	date:
revisions:	date:
file name:	
Planting Plan.dwg	