

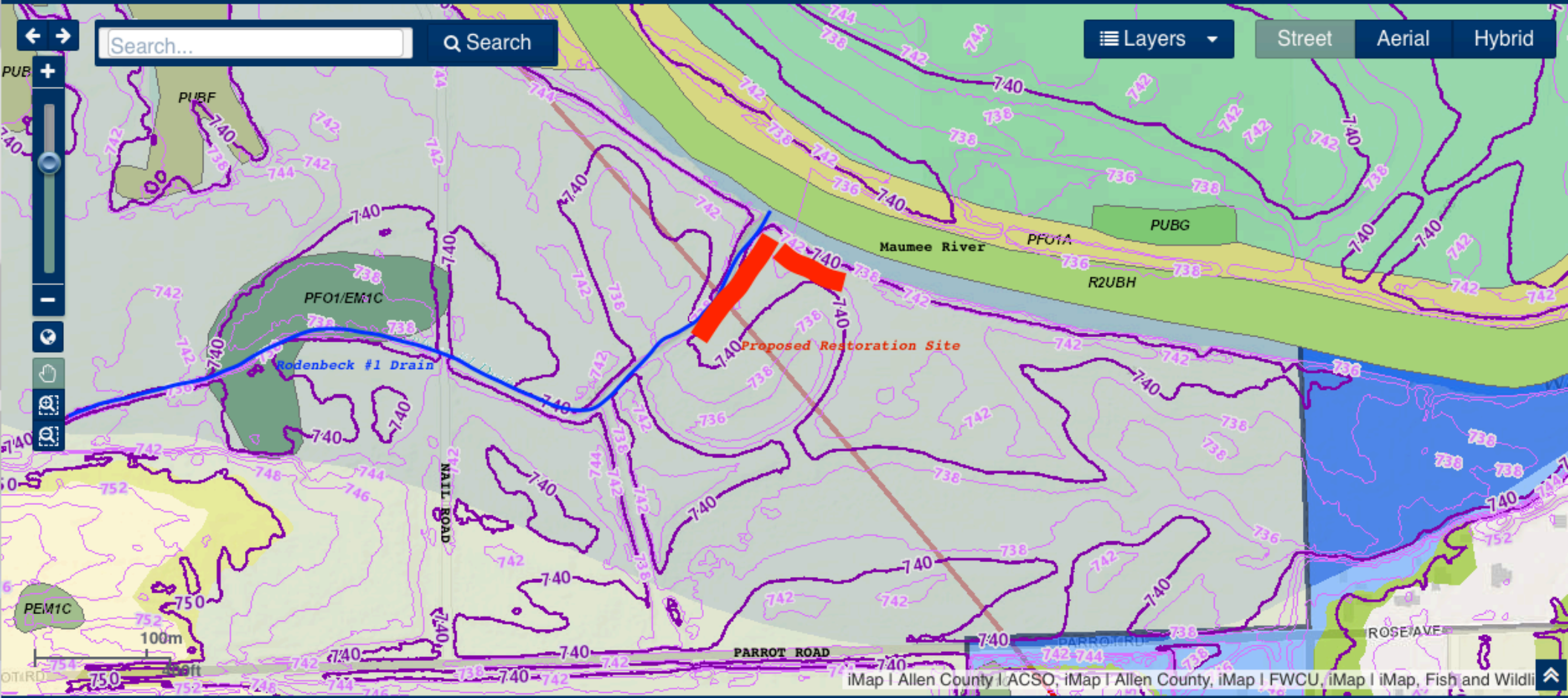


GIS Engineering Viewer



Search... Search

Layers Street Aerial Hybrid



iMap | Allen County | ACSO, iMap | Allen County, iMap | FWCU, iMap | iMap, Fish and Wildlife

The special flood hazard areas displayed should be used for reference purposes only. The official 2009 and 2013 dated Flood Insurance Rate Maps (FIRMs) and 2013 Flood Insurance Study (FIS) should be used for floodplain determinations. FEMA issued Letters of Map Change are on file in the Department of Planning Services. Please contact the Department of Planning Services at (260)-449-7607 to review the 2009 and 2013 dated FIRMs, 2013 FIS, and Letters of Map Change. Any and all information is not intended to be used for any legal decisions. Actual locations, elevations, restored coordinate values, or locations relative to real property boundaries are the responsibility of the user.