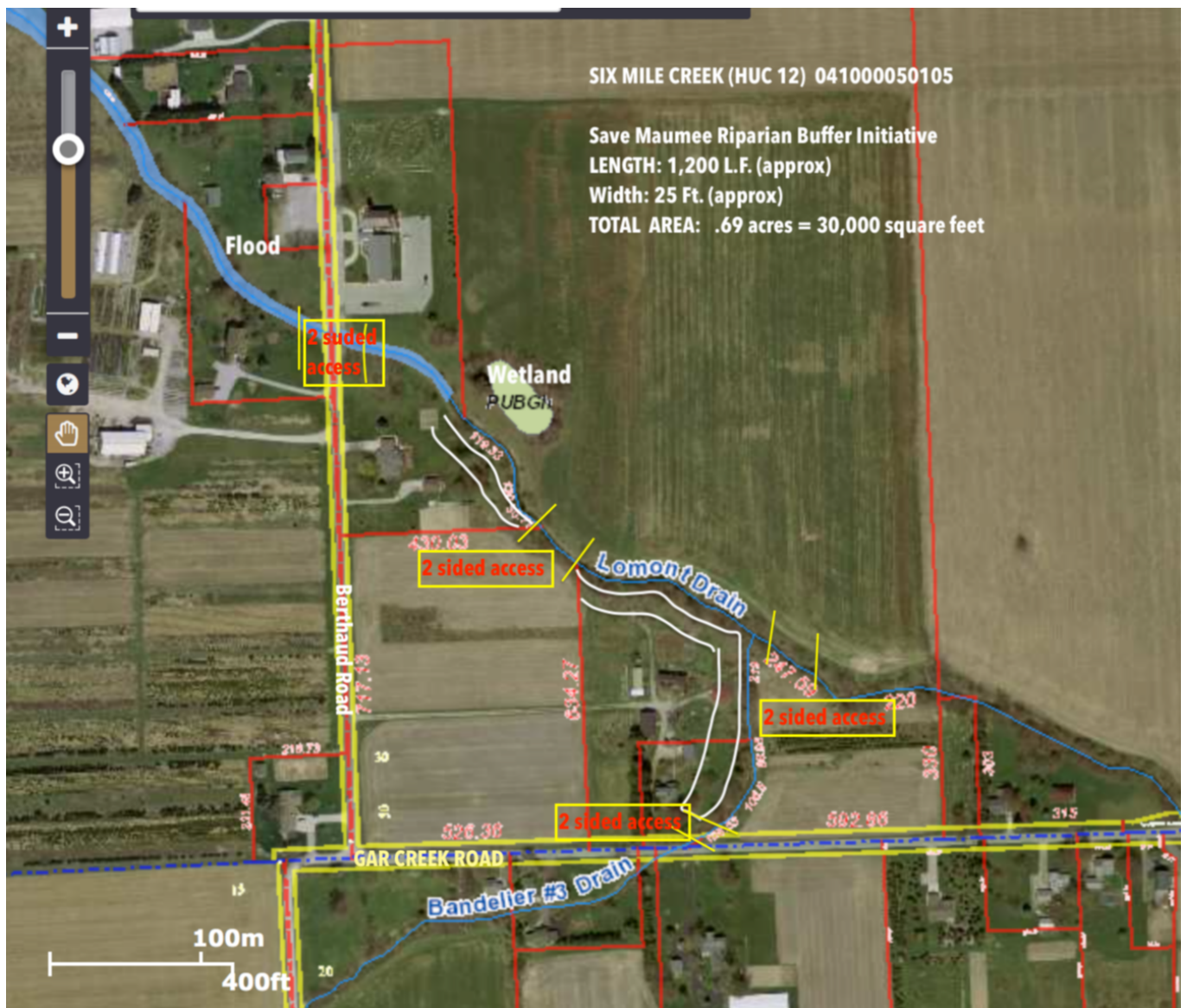


## Save Maumee Riparian Buffer Initiative Six Mile Creek HUC12, LaMont Drain and Bandelier #3 Drain, Milan Township (Area 09 Section 34), New Haven, Allen County, Indiana, 46774

**460 Trees to be placed in Sixmile Creek** Subwatershed HUC12: 041000050105 OR HUC14: 04100005010060. Lamont Drain lies within Sixmile Creek (HUC12) between Bremer Rd., Gar Creek Rd and Berthaud Rd.

Bandelier #3 Drain flows into Lamont from the southwest. BANDELIER #3 DRAIN flows northeast and joins LAMONT DRAIN flowing north and west toward the main stem of the Maumee River. ALL project work will be on the South side of Lamont Drain and the west side of Bandelier #3 Drain.



**3 Private Property owners: Randy Hauke, Jon & Kelly Koeneman, Nicholas Lake**

**Elevation:** 746-750 height for contour planting - top of the slope

**Scope:** Riparian Buffer to plant 20-25 feet wide by approx. 1200 linear feet = .69 acres

**Soil on Bandelier Drain:** Silty Clay Loam

**Soil on Lamont Drain:** Eel Silt Loam

**ALL MAPS OF INTEREST:** <http://savemaumee.org/lamont-drain-riparian-buffer-initiative/>

## **Nature and purpose of project: Streambank Restoration Conservation**

Save Maumee Grassroots Organization is working to fulfill a grant through the Great Lakes Restoration Initiative with the United States Department of Agriculture, Forest Service. The Riparian Buffer Initiative is seeking approval for our 6th project in Allen County. We are working to secure the legalities of planting in the riparian buffer area next to regulated drains; Bandelier #3 Drain and Lamont Drain in Milan Township, New Haven, Indiana. Six Mile Creek Subwatershed, is considered one of the most degraded ditches in Allen County, according to the Upper Maumee Watershed Management Plan. (IDEM, December 2014; [http://www.in.gov/idem/nps/files/wmp\\_maumee-upper\\_wmp.pdf](http://www.in.gov/idem/nps/files/wmp_maumee-upper_wmp.pdf))

The Riparian Buffer Initiative has letters of support from Allen County Soil & Water Conservation District, Upper Maumee Watershed Partnership, Northeast Indiana Regional Coordinating Council and Earth Source.

The nature of the Riparian Buffer Initiative, is to improve water quality. Within Six Mile Creek subwatershed, will install over 1,200 linear feet of riparian buffer, with a width no less than 20 feet (averaging 25 feet wide), yielding upon completion .74 acres (or 32,250 square feet) of increased stormwater retention, by adding 460 native trees. Save Maumee will begin selectively removing invasive species previous to tree installation in early April 2018.

Pending approval, Site Design will be provided by Earth Source's Landscape Architect Dan Ernst, PLA, ASLA. Registered with the State of Indiana #920011.

Save Maumee Grassroots Organization package policy is through The Cincinnati Insurance Companies Policy #0458145, through local company, Lupke Rice, Insurance and Financial Services. Contact Dale Gajewski (260) 969-1925 or Jennifer Schlegel (260) 424-4150.

**The purpose of project** is to preserve and improve over 1,200 linear feet of drains that lie within Sixmile Creek subwatershed. This specific project site will:

- Add 460 native trees and shrubs
- Capture 27,140 gallons of water / year (59 gallons/tree/year) average
- Reduce nitrogen load reduction yield of 192 pounds/year average
- Phosphorus load reduction would yield 95 pounds/year average
- Sediment load reduction would yield 95 tons/year average
- Gain resident participation in implementation efforts and improve habitat.
- Partnership with land owners and land managers, to assist and donate their land for services.

Entire Save Maumee Riparian Buffer Initiative and previous projects found here:

<http://savemaumee.org/save-maumee-riparian-buffer-initiative>

**The general scope of the work** for this project will break ground on April 2, 2018, with selective removal of invasive species cut by chainsaws, hired through licensed and insured, Top Notch Tree Service, Bauermeister Tree Service and or Absolute Landscaping. The invasive species will be cut, and chipped debris will be removed from the site and disposed of at the Allen County Solid Waste Composting. Stumps will receive glyphosate (Rodeo TM) application without surfactant, applied by volunteers, to stop/stunt future growth of the invasive. April 20, the trees will be delivered and planted within the next week, with most of the work being completed by the end of April 2018. Earth Day public event will be held April 22 & 23, 2018. The trees will continue to be monitored on a monthly basis, with a watering schedule throughout, until January 2019. The sites will be treated gently and with all necessary approvals from the EPA, USDA Forest Service, IDEM, DNR and Allen County Surveyors Office/Drainage Board.

**460 Native Species will be 75% trees and 25% shrubs,** which have been approved by the USDA Forest Service, Indiana Department of Natural Resources and Purdue Extension Offices.

**Trees:**

River Birch, *Betula nigra*  
Northern Pecan, *Carya illinoensis*  
Shagbark Hickory, *Carya ovata*  
Hackberry, *Celtis occidentalis*  
American Sycamore, *Plantanus occidentalis*  
Quaking Aspen, *Populus tremuloides*  
Swamp White Oak, *Quercus bicolor*  
Burr Oak, *Quercus macrocarpa*  
Chinquapin Oak, *Quercus muehlenbergii*  
Shumard Oak, *Quercus shumardii*  
Black Willow, *Salix nigra*  
Sassafras, *Sassafras albidum*  
Bald Cypress, *Taxodium distichum*

**Shrubs:**

Grey Dogwood, *Cornus racemosa*  
Silky Dogwood, *Cornus amomum*  
Common Ninebark, *Phusocarpus opulifolius*  
Aarowwood Viburnum, *Viburnum dentatum*  
Elderberry, *Sambucus nigra*  
Serviceberry, *Amelanchier canadensis*

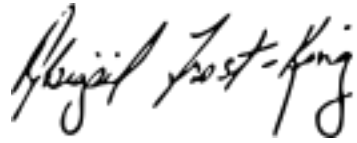
The trees for this site will be delivered from Woody Warehouse in 1-7 gallon pots. No bare root trees will be planted. Corresponding mulch will be installed, with each tree receiving 1-3 inches of seasoned, non-dyed mulch.

All maps corresponding with this Construction plan are found here:

**<http://savemaumee.org/lamont-drain-riparian-buffer-initiative/>**

Thank you for time in assessing our project. Should you need any more information, please do not hesitate to contact me.

Respectfully submitted by,



Abigail King, Save Maumee Riparian Buffer Initiative Project Manager  
Save Maumee Grassroots Organization Founder & President  
1901 Niagara Dr. Fort Wayne, IN 46805  
Phone: 260-417-2500  
Fax: 260-486-3822  
Email: [abby@SaveMaumee.Org](mailto:abby@SaveMaumee.Org)

Save Maumee Riparian Buffer Initiative Project boundaries are within Allen County's Upper Maumee River, Western Lake Erie Basin and are considered part of The Great Lakes Restoration Initiative Area of Concern. These projects are made possible through the federal Great Lakes Restoration Initiative (GLRI) and U.S. Forest Service.

Larger Image HERE: <http://savemaumee.org/lamont-drain-riparian-buffer-initiative/>

Oversight by Federal Grant Consulting Agency:

United States Department of Agriculture  
Forestry Service

Jeremy Peichel, MS, MPP,  
Watershed Forestry Specialist  
Phone: 651-649-5221

Fax: 651-649-5238  
[jpeichel@fs.fed.us](mailto:jpeichel@fs.fed.us)

1991 Folwell Ave.  
St. Paul, MN 55108

State of Indiana Approval:

Indiana Department of Natural Resources Urban Forester  
State Urban Forestry Coordinator

Carrie Tauscher  
Phone: 317-234-4386  
Cell: 317-629-0711

[ctauscher@dnr.in.gov](mailto:ctauscher@dnr.in.gov)  
402 W. Washington St., W296  
Indianapolis, IN 46204

The USDA is an equal opportunity provider, employer, and lender. In accordance with Federal civil rights law and U.S. Department of Agriculture (USDA) civil rights regulations and policies, the USDA, its Agencies, offices, and employees, and institutions participating in or administering USDA programs are prohibited from discriminating based on race, color, national origin, religion, sex, gender identity (including gender expression), sexual orientation, disability, age, marital status, family/parental status, income derived from a public assistance program, political beliefs, or reprisal or retaliation for prior civil rights activity, in any program or activity conducted or funded by USDA (not all bases apply to all programs). Remedies and complaint filing deadlines vary by program or incident.