

Annual Interim Report 2019

Save Maumee Riparian Buffer Initiative (RBI) III

Reporting Period: January 1, 2019 through December 31, 2019

Report Submitted: December 31, 2019

Community Forestry Program Funding Opportunity

The Catalog of Federal Domestic Assistance (CFDA) 10.664 Cooperative Forestry



Recipient Contact : Save Maumee Grassroots Organization Inc.

RBI Manager, Abigail King

abby@SaveMaumee.Org

DUNS #: 056074692

EIN #: 46-4159838

Project Funder: U.S. Forest Service, CFDA Urban Community

USDA Forest Service Oversight by Donna Marie Foster

Metrics of 2 Riparian Buffer Initiative Projects 2019 (Year 1 of 2)

Total trees added: 1,084

Total linear feet along stream: 2,250LF

Total acreage of invasive species removed: >1.7 acres (74,250 square feet) approx.

Gallons of Runoff Reduced: 63,956 gallons (1,084 trees x 59 gallons / tree)

Non-federal Match of Save Maumee volunteer hours alone: \$44,364.65 (1,883.05 hours logged)

Site 1) “Meyer Road Site” Full Specification Information & Maps:

<https://savemaumee.org/paul-trier-ditch/>

Site 2) “Ellenwood Site” Full Specification Information & Maps:

https://savemaumee.org/end-of-ellenwood-drive_new-haven/

General Information of Riparian Buffer Initiative III

<https://savemaumee.org/rbiiii>

Riparian Buffer Initiative III WORK PERFORMANCE
Jan 1, 2019 through December 31, 2019

- * all work is within grant requirements and budget
- * all receipts and hard-copy & volunteer signature sheets are available
- * volunteers are the success story of Save Maumee projects
- * This report corresponds with SF425 and detailed invoice USDA INVOICE #10 and USDA INVOICE #11 and corresponding SF270.

Completed planting two sites within the Upper Trier Ditch (HUC12 041000050101)

1) “Meyer Road Site” adding 602 bare root trees (1,050 linear feet by 25 ft. wide) planted in April / May 2019 and invasive removal prep. of 26,250 square feet = 35,518 gallons of runoff reduced on average. Volunteers logging 813.8 hours at Meyer Rd. between April-May 2019 (@\$23.56/hour)

2) “Ellenwood Site” adding 482 trees (1,200 linear feet by 40 ft. wide) planted in October 2019 and invasive removal prep. of 48,000 square feet over 8 weeks = 28,438 gallons of runoff reduced on average. Volunteers logging 1,069.25 hours at Ellenwood between September-October 2019 (@\$23.56/hr)

- * Both sites are private property and do not have any public traffic to erect signage
- * Research locating 2 sites & securing site, map creations & admin services/reporting
- * Securing all legalities, printing, website updates & public notifications relations
- * Securing/retaining volunteers to plant trees & pre-remove invasive species at 2 sites
- * Purchase of supplies to aid trees/small supplies/tools & organize contractual agencies
- * Public event organizing for tree plantings, retaining & securing volunteers/small groups
- * Checking trees for healthy growth
- * Seeking final site (3 of 3) for April 2020 tree planting
- * No services or billing November 11 through December 31, 2019

Important note that the removal of invasive species will continue to add costs to all our projects and remain a problem in all areas. Unwanted growth continues to be the #1 cost and time consuming portion of our land management techniques and we may not be able to continue our projects in a future grant cycle without more paid services for selective invasive removal and more oversight of volunteers.

RBI III Annual Report 01/01/2019 through 12/31/2019

RIPARIAN BUFFER INITIATIVE III 2019	
Total Federal Funds Available	\$99,357.90
Total Required Other Resources nonfederal match:	\$43,032.40
Required Projected Project Total Value:	\$142,390.30
No services November 11 through December 31, 2019	
2019 TOTAL VALUE OF PROJECTS Jan-Dec (year 1 of 2)	\$99,827.45
FEDERAL REIMBURSEMENT TOTAL	\$34,860.44
TOTAL Total Other Resources nonfederal match:	\$46,662.37
Other Resources nonfederal match of VOLUNTEER HOURS	\$44,364.65
Other Resources nonfederal match SEED / PLANTS / TREES	\$1,1887.00
Other Resources nonfederal match of PRINTING/ADS	\$410.72
CORRESPONDS WITH : SF270 Jan to July 2019 SF270 July to November 2019 SF425 2019 Itemized breakdown: Save Maumee USDA Invoice 10 and USDA Invoice 11	

Background of Trier Subwatershed (HUC12: 041000050101)
(Trier Ditch Subwatershed HUC14: 04100005010030)

Trier Ditch HUC12 is in the Western Lake Erie Basin and remains on the U.S. EPA Indiana 303(d) list of impaired waterways and is considered “critical” due to lack of riparian buffers, urban land-use, CSO’s and septic tank failures. Trier Watershed itself drains 18,039.4 acres within Indiana. The water from the Upper Trier Legal Drain flows northeast past “Ellenwood Site,” then passes the April 2019 tree planting site deemed “Trier Road,” and continues northeast past Waste Management of Fort Wayne/Adams Center Landfill to the Lower Trier Ditch. Both planting sites are less than 5 miles from the Maumee River’s main stem. The Maumee headwaters in Fort Wayne then flows east; through the political boundaries of the City of New Haven, Allen County and State of Indiana, eventually out-letting into Maumee Bay of Lake Erie in Toledo, Ohio.

Full engagement and cooperation is necessary with County (Indiana) Surveyors Offices and the County Drainage Boards for current and future projects like this one. Allen County Drainage Board worked to accommodate our project plantings on one side of legal drains and ditches, holding this governing body accountable to the Indiana Drainage Handbook. This has been an added benefit to streams served by the Riparian Buffer Initiative.

Allen County Surveyors Office approved our tree plan petition with the condition the tree plantings be no closer than 5’ from top of bank outward on the non-working side of the Trier Upper Drain. Requirements include approval by a public meeting of the Allen County Drainage Board after engineering specification maps and signatures are provided on [form] *Petition for Consent to Allow Permanent Structure*, which was revised in 2019.

Allen County Surveyors Office cooperating with our project plantings on one side of legal drains and ditches is necessary to increase stormwater retention, habitat and stream health. After working on RBI projects for 6 years, Save Maumee realizes that Allen County (Indiana) Surveyors Office and the Allen County Drainage Board (ACDB) are important to engage. Our particular ACDB and Surveyor need education on restoration/mitigation on the 2,500 miles of legal drains they continue to clear-cut.

Two Riparian Buffer Initiative sites were completed in 2019, with 1 remaining site required to be completed in 2020. Invasive species continue to be a problem in all areas. Due to regular (to heavy) rain cycles this season, we purchased more invasive species removal supplies rather than watering supplies. Unwanted growth continues to be the #1 cost and time consuming portion of our land management techniques. Everyone wants to plant a tree, but selective invasive removal is more difficult and dangerous to the general public. We may not be able to continue our projects in a future grant cycle without more paid help for selective invasive removal and oversight of volunteers.

The first site, Meyer Road, bare root trees were used in April 2019 due to this industrial site having so much asphalt and gravel. Smaller trees were used due to predicted high fatality rate at the rate (on average) of 1 every 6 feet or so. Even though the requirement for this site was 380 trees, 602 bare root trees were installed and the hole was heavily backfilled with seasoned mulch, but backfilling only a small amount of poor soil. Donna Foster approved the change from potted trees to bare root trees on April 18, 2019 due to the lateness in receiving the grant award letter. Overall this did not impact the scope of the work. The soil was mostly fill dirt and gravel to raise elevation of this land, so smaller trees tend to do better and break up the clay and debris as they grow. It was beneficial to not plant larger trees. Bare areas from invasive removal were seeded with native seed at both sites.

Site 2, Ellenwood, planted in October 2019 had at least 30 years of untouched growth and took over 7 weeks to prepare an area suitable for trees. Larger trees were chosen and mulch was added properly after planting. Invasive removal of almost 2 acres at Ellenwood was the heaviest clearing of an understory that we have ever undertaken. It was necessary and a new forest was created!

Allen County Drainage Board working to accommodate our project plantings on one has been an added benefit to streams served by the Riparian Buffer Initiative, which lie in the Upper Maumee Watershed and Western Lake Erie Basin. Other partners include Carriage House Mental Health Services, Northeast Indiana Chapter Sierra Club, Allen County Corrections, Manchester University, New Haven-Adams Township Parks and Recreation, Big Brothers/Big Sisters, The Nature Conservancy, Crowe Forest Management, Upper Maumee Watershed Partnership, and Purdue University Fort Wayne have provided advertising and volunteers.

Site 1 of 3: "Meyer Road Site"

Site Completed June 30, 2019

Paul Trier Ditch Subwatershed (HUC12 041000050101)

Includes addition of 602 bare root trees and 2 large Sycamore (7 species),
1,050 linear feet by 25 feet wide of invasive removal (26,250 square feet)
& large trash removal of historic rubbish

Physical Address: behind Gunsaulus Industrial Services 4325 Meyer Rd. Fort Wayne, IN 46806

90 Volunteers logged 813.8 hours at this site

Estimated gallons of runoff reduced = 35,513 gallons/year



Selective removal allowed project site to retain many of the Cottonwood trees, Box Elder, Dogwood, Willows (*Salix exigua exigua* or *S. exigua interior*), Sumac (*Rhus typhina*)

"Meyer Road" Narrative, Site 1 of 3

The entire project area for Upper Paul-Trier Ditch is over 1,055 linear feet (requirement of 1,000 linear feet) by at least 20 feet wide. Majority of the site is over 30 feet wide, which added approximately, 21,100 square feet of riparian buffer, yielding .05 acre of additional forested corridor along the Trier Ditch. There appears to be a historic reservoir, underground storage tank, on site that has been capped. This historical zoned "industrial" area had a strip next to the stream that retained 20 years of growth. Asian bush honeysuckle, callery pear and other invasive species were removed previous to tree plantings. Our project selectively retained many of the Cottonwood trees, Box Elder, Dogwood, Willows (*Salix exigua exigua* or *S. exigua interior*), and Sumac (*Rhus typhina*) at this "Industrial Zoned" site.

Volunteers removed over 2,000lbs (>1 ton) of historic trash from the site owned by Jerome Henry (Hartzell Realty). This private property has a long-term rental agreement with Gunsaulus Industrial Services who currently runs a business on the land.

Save Maumee Riparian Buffer Initiative ordered & installed 602 bare root trees (requirement of 380 trees) in April and May of 2019, with invasive removal spanning April through June 2019. Plantings were (on average) 1 every 6 feet or so. These trees are estimated to reduce stormwater, by 35,518 gallons per year, to the adjacent stream. Our calculations of stormwater retention comes from the Environmental Protection Agency (EPA) using current standard of 59 gallons/tree/year for the amount of average runoff reduced per tree. [https:// www.epa.gov/soakuptherain/soak-rain-trees-help-reduce-runoff](https://www.epa.gov/soakuptherain/soak-rain-trees-help-reduce-runoff).

Previous to the plantings, the tree line was almost non-existent, with approximately 60 native full-grown trees on the entire lot. The site is zoned "heavy industrial" and included gravel and fill dirt. This site needed smaller trees (bare root) due to the industrial site having so much asphalt and gravel. Since 1-5 gallon potted trees were not used, we predicted a higher fatality rate of the smaller bare root trees, so we intentionally increased the odds of retaining the total sum planted through adding quantity. Donna Foster approved the change from potted trees to bare root trees in April due to timing of award letter and industrial soil with extensive gravel present.

Save Maumee volunteers are the success story of the Riparian Buffer Initiative. 813.8 hours were logged by approximately 90 different volunteers between April 1, 2019 - June 30, 2019.

Continued: Meyer Road Site Partnerships & Recognition

Partnerships included advertising from Manchester University and at least 4 foreign exchange students from their Pharmacology Department, volunteered 4 hours of time each! We also had 4 Carriage House residents and 2 staff members volunteer their time over 2 days. Carriage House is important because they serve our community through working to overcome mental illness.

Save Maumee hosted our 14th Annual 2-Day Earth Day, to plant the trees at the Meyer Road site. Partnerships included bringing together our community to promote preservation and celebrate Earth! Fort Wayne Mayor, Tom Henry made a proclamation to kick off our event! We were listed on the official Earth Week Calendar that spanned Monday April 22 through Tuesday April 29th, 2019. This expansion allowed unification & engagement of our local public, private and grassroots sectors. Together we will shared the message of environmental awareness with Northeast Indiana.

TO SEE OUR MEDIA COVERAGE CLICK HERE:

Below are the Earth Week Events Advertised

Save Maumee 2-Day Tree Planting

[https://savemaumee.org/paul-trier-ditch/?](https://savemaumee.org/paul-trier-ditch/?fbclid=IwAR0PGNIGGTodyPSUSmqzs_M5AOWTY_v6zmk62PHMapk102EnfRpa4sd7oTQ)

[fbclid=IwAR0PGNIGGTodyPSUSmqzs_M5AOWTY_v6zmk62PHMapk102EnfRpa4sd7oTQ](https://savemaumee.org/paul-trier-ditch/?fbclid=IwAR0PGNIGGTodyPSUSmqzs_M5AOWTY_v6zmk62PHMapk102EnfRpa4sd7oTQ)

Livable Futures Expo

<https://www.facebook.com/events/429474364485312/>

Black Swamp Permaculture Convergence

<https://www.facebook.com/events/632955250483493/>

United We Stand Concert

<https://www.facebook.com/events/1419713698171736/>

Community Garage Sale

<https://www.facebook.com/events/2316842775264560/>

Little River Wetlands "Protect Our Species" Earth Day Event

<https://www.facebook.com/events/305235886842541/>

Food Not Lawns Garden Mob Event, "Resistance is Fertile"

<https://www.facebook.com/events/2358240991122528/>

The Great American Clean-Up

<https://www.facebook.com/events/391717518284961/>

Sol Fest

<https://www.facebook.com/events/448670152536514/>

Plowshares Grand Launch Fundraiser

<https://www.facebook.com/events/320829738615055/>

Indiana Tech Events

<https://www.facebook.com/events/447901289362032/>

Site 2 of 3: "Ellenwood Site"

Completed October 30, 2019

Paul Trier Ditch Subwatershed (HUC12: 041000050101)

Includes addition of 482 Trees, 28 Species along 1,200 linear feet by 40 feet wide (approx 1.25 acres) of invasive removal

Location: South of Ellenwood Drive, West of Meyer Rd Fort Wayne, IN 46806

95 Volunteers logged 1,069.25 hours at this site

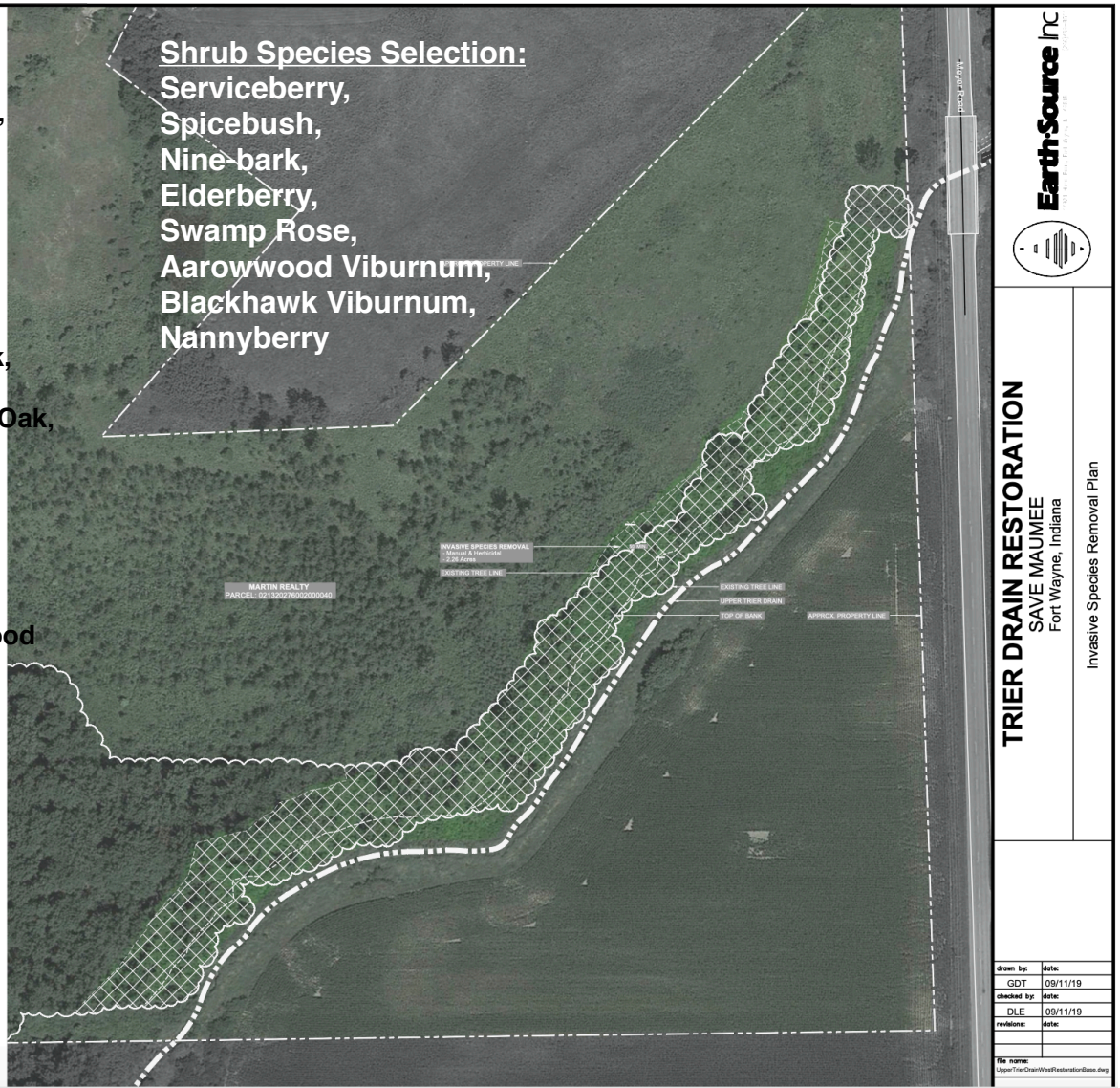
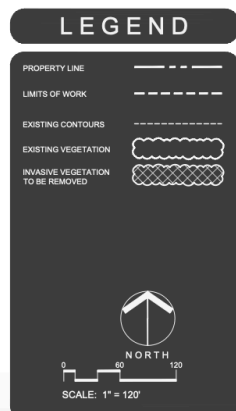
Estimated gallons of runoff reduced = 35,513 gallons/year average

Tree Species Selection:

Yellow Buckeye,
Bitternut Hickory,
Shagbark Hickory,
Northern Catalpa,
Hackberry,
Butternut,
River Birch,
Sweetgum,
Black Gum,
Quaking Aspen,
Swamp White Oak,
Bur Oak,
Swamp Chestnut Oak,
Chinquapin Oak,
Pin Oak,
Pussy Willow,
Black Willow,
Sassafras,
Bald Cypress,
American Basswood

Shrub Species Selection:

Serviceberry,
Spicebush,
Nine-bark,
Elderberry,
Swamp Rose,
Arrowwood Viburnum,
Blackhawk Viburnum,
Nannyberry



Ellenwood Site Narrative, Site 2 of 3

Save Maumee Riparian Buffer Initiative ordered & installed all 482 trees at Save Maumee's 2-Day Planting on October 25 & 26, with 28 different species (requirement of 460 trees). Twenty-two additional trees were purchased and planted due to perfect seasonal weather. The entire project area completed for this site along the Upper Trier Ditch is 1,200 linear feet of riparian buffer by a width of about 45 feet throughout. This area now yielding >1.25 acres of added native forest along one of the most critical areas of the Upper Maumee River's sub-watersheds.

The location is adjacent to zoned "heavy industrial" complexes, but the soils were healthy enough for large trees to be installed, and will reduce stormwater runoff by approximately 28,438 gallons per year. Our calculations of stormwater retention comes from the Environmental Protection Agency (EPA) using current standard of 59 gallons/tree/year for the amount of average runoff reduced per tree. <https://www.epa.gov/soakuptherain/soak-rain-trees-help-reduce-runoff>. Most trees were between 3-7 gallon sized. The 482 trees were planted (on average) 1 tree every 7-10 feet or so. Larger diameter of trees were selected, available and within budget.

The *Ellenwood* site does not have an address to designate this location. This site lies south of Ellenwood Drive and west of Meyer Road and designation is Zoned Industrial / Floodplain (private property owned by Gerald Martin (Martin Realty). It is in-between the City of Fort Wayne / City of New Haven municipality boundaries in Indiana, on the Upper Trier Ditch. The *Ellenwood* site lies just upstream and southwest of the *Meyer Rd.* site. The excessive, undisturbed growth added to project cost. *Ellenwood's* ditch bank is south of the historical zoned "industrial" area and retained at least 30 years of undisturbed growth of bush honeysuckle, callery pear and other invasive species that were removed previous to tree planting. Our project selectively retained many of the Cottonwood, Box Elder, Dogwood, Willows (*Salix exigua exigua* or *S. exigua interior*), Pin Oak (*Quercus palustris*), Quaking Aspen (*Populus tremuloides*), Eastern Red Cedar (*Juniperus Virginiana*) and Smooth Sumac (*Rhus typhina*) along this "abandoned" ditch.

It took 7 weeks for volunteers and contracted workers to clear the invasive shrubs along the entire ditch, 1,200 linear feet by approx. 45-50 feet wide, and selectively retain native species. All invasives were stump treated with glyphosate brand AquaNeat the same day. Each day, after the clearing another 70 feet (or so), native seed blend was spread in bare areas and along the slope of the ditch-bank.

Continued: Ellenwood Site 2 of 3 Narrative

Save Maumee's dedicated volunteers logged 1,069.25 hours in September & October 2019 for this project alone. Volunteers are the #1 reason our projects are successful. 317.5 hours were logged by 89 different volunteers for the 2-Day Public Tree Planting on October 25 & 26. Invasive removal was difficult and the very dedicated volunteers logged 729.25 hours over the course of 7 weeks leading up to the tree planting and over 22.5 hours to clean-up after the public event. During that time, we also checked the trees from the adjacent site (Meyer Rd. April 2019 tree planting) and the trees were all growing well and in good condition on October 31, 2019.

It is important to note that the removal of invasive species (primarily bush honeysuckle) will continue to add costs to all of our projects in the future. For example, it was only 1,000 linear feet from parking lot, to the ditch bank itself. It took one full working day to create a **walking** path from where we park, to the perennial stream. There were NO ticks and it was decided that lack of deer paths would correlate to no ticks due to the lack of mammals (i.e. livestock) that would transfer tick species!

The difference between "before" (the first day we began to clear honeysuckle) and "after" (the tree planting) was exclaimed dramatically by volunteers, "It is a new forest!." Volunteers were able to plant these large trees quickly because trees and mulch were moved into place over two days, before the 2-Day public event.

All bare areas from invasive removal were seeded with a native seed blend 1) at each days end, after the invasive species were cleared, 2) after the mulch came and trees were placed.

July through November 2019 partners include Carriage House Mental Health Services, Allen County Corrections, Whitley County Corrections, Manchester University, Big Brothers/Big Sisters, The Nature Conservancy, Northeast Indiana Chapter Sierra Club, and Upper Maumee Watershed Partnership and a few private companies have provided advertising and volunteers.

Continued: Ellenwood Site Partnerships & Recognition

• **Save Maumee volunteers plant trees: Journal Gazette: FW Local Metro;** October 26, 2019, Photograph, Mike Moore. (date accessed 11/07/2019)

https://www.journalgazette.net/news/local/20191026/save-maumee-volunteers-plant-trees?fbclid=IwAR3iaOAALqCNYe3Wn_7S6xl2KVokMEKaDR4_85Hvj5XKF1c1soOy_lxkrg

• **Public Invited to Help Plant Native Trees Oct. 25-26: KPC News by Emeline Rodenas for Indiana Fort Wayne Newspapers.** October 23, 2019 (accessed 11/07/2019) https://www.kpcnews.com/article_f0eea4f2-50bd-5d9c-a4fe-0991cb59ecd4.html?fbclid=IwAR08g1RyPMH8uLIMOLouFDZ759fw578bgC_qsCGiHnH_nTrbb8imgKVqyfc

https://www.kpcnews.com/article_f0eea4f2-50bd-5d9c-a4fe-0991cb59ecd4.html?fbclid=IwAR08g1RyPMH8uLIMOLouFDZ759fw578bgC_qsCGiHnH_nTrbb8imgKVqyfc

• **“ Save Maumee Grassroots Organization, the local environmental group. Its work this year included planting 480 trees along water-quality ditches and removing invasive species from the banks of ditches draining into the Maumee, which flows into Lake Erie.” November 28, 2019, Journal Gazette Opinion. (accessed December 20, 2019)**

<https://www.journalgazette.net/opinion/20191128/we-are-thankful-for194-?fbclid=IwAR3CJ5qNwci7TqVcEfoQFM9je2vAjTpoiHksnsvjVPv0VXeVrPatxs5hacw>

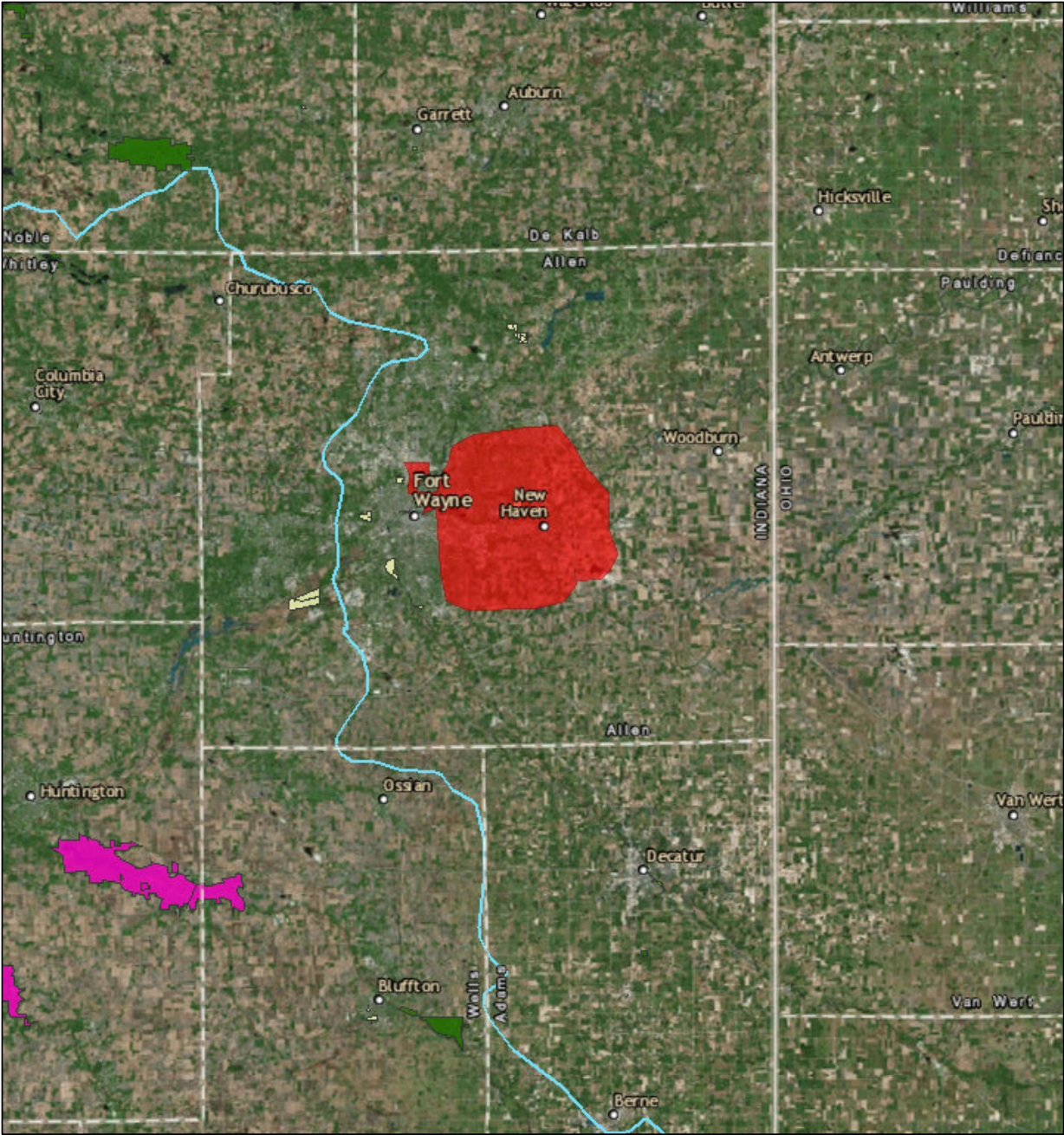
Seed planted, but not limited to: Grasses, Sedges, Rushes & Forbes

Andropogon gerardi Big Bluestem, *Carex bicknellii* Bicknell's Sedge, *Elymus canadensis* Canada Wild Rye, *Panicum virgatum* Switch Grass, *Schizachyrium scoparium* Little Bluestem, *Sorghastrum nutans*, Indian Grass, *Sporobolus heterolepis* Prairie Dropseed, *Scripus cyperinus* Wool Grass

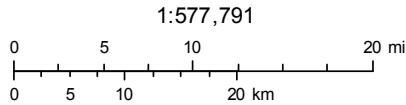
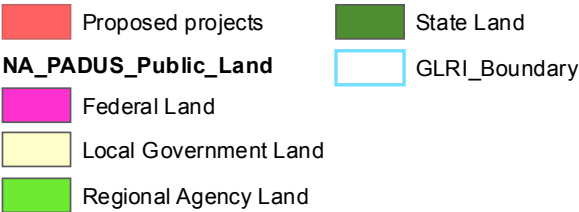
Asclepias tuberosa Butterfly Milkweed, *Aster laevis* Smooth Blue Aster, *Aster novae angliae* New England Aster, *Baptisia leucantha* White Wild Indigo, *Coreopsis lanceolata* Sand Coreopsis, *Coreopsis tripteris* Tall Coreopsis, *Echinacea pallida* Pale Purple Coneflower, *Echinacea purpurea* Purple Coneflower, *Eryngium yuccifolium* Rattlesnake Master, *Gentiana andrewsii* Fringe-top Bottle Gentian, *Helianthus mollis* Downy Sunflower, *Heliopsis helianthoides* False Sunflower, *Liatris scariosa nieuwlandii* Savanna Blazingstar, *Liatris spicata*, Spiked Gayfeather, *Monarda fistulosa* Wild Bergamot, *Parthenium integrifolium* Wild Quinine, *Penstemon digitalis* Foxglove Beard Tongue, *Pycnanthemum virginianum* Mountain Mint, *Ratibida pinnata* Yellow Coneflower, *Rudbeckia hirta* Black-eyed Susan, *Senna hebecarpa* Wild Senna, *Silphium integrifolium* Rosin Weed, *Silphium laciniatum* Compass Plant, *Silphium terebinthinaceum* Prairie Dock, *Solidago nemoralis* Gray Goldenrod, *Solidago rigida* Stiff Goldenrod, *Tradescantia ohiensis* Ohio Spiderwort, *Verbena stricta* Hoary Vervain, *Vernonia gigantea* Tall Ironweed, *Veronicastrum virginicum* Culver's Root, *Zizia aurea* Golden Alexanders.

Common Name	Scientific Description	4325 Meyer Rd 600 trees	4615 Ellenwood Dr. 482 trees
American Cranberry Bush	<i>Viburnum trilobum</i>		1 large located on site (section 4)
Arrowwood Viburnum	<i>Viburnum dentatum</i>		20 (3 gallon)
Aspen, Quaking	<i>Populus tremuloides</i>		30 (3 gallon)
Black Cherry	<i>Prunus serotina</i>	60	
Black Gum	<i>Nyssa sylvatica</i>		10 (7 gallon)
Buckeye, Ohio	<i>Aesculus glabra</i>		15 (3 gallon)
Buckeye, Yellow	<i>Aesculus flava</i>		15 (3 gallon)
Butternut	<i>Juglans cinerea</i>		25 (3 gallon)
Cyprus, Bald	<i>Taxodium distichum</i>		5 (7 gallon)
Elderberry, American Black	<i>Sambucus canadensis</i>		20 (3 gallon)
Hackberry, Common	<i>Celtis occidentalis</i>		15 (3 gallon)
Hickory, Bitternut	<i>Carya cordiformis</i>		15 (5 gallon)
Hickory, Shagbark	<i>Carya ovata</i>	10	10 (7 gallon)
Nannyberry	<i>Viburnum lentago</i>		20 (3 gallon)
Ninebark, Common	<i>Physocarpus opulifolius</i>		10 (3 gallon)
Northern Catalpa	<i>Catalpa speciosa</i>		7 (7 gallon)
Oak, Burr	<i>Quercus macrocarpa</i>	110	40 (5 gallon)
Oak, Chinquapin	<i>Quercus muehlenbergii</i>		6 (5 gallon)
Oak, Pin	<i>Quercus palustris</i>		30 (3 gallon)
Oak, Swamp Chestnut	<i>Quercus michauxii</i>	100	10 (7 gallon)
Oak, Swamp White	<i>Quercus bicolor</i>	100	20 (7 gallon)
River Birch	<i>Betula nigra</i>		15 (7 gallon)
Sassafras	<i>Sassafras album</i>		2 (18 KB) both looked damaged
Serviceberry, Allegheny	<i>Amelanchier laevis</i>		15 (3 gallon)
Spicebush	<i>Lindera benzoin</i>		25 (3 gallon)
Sycamore, American	<i>Platanus occidentalis</i>	202	15 (5 gallon)
Swamp Rose	<i>Rosa Palustris</i>		15 (3 gallon)
Sweetgum	<i>Liquidambar styraciflua</i>		15 (7 gallon)
Tulip Poplar	<i>Liriodendron tulipifer</i>	10	
Viburnum, Blackhaw	<i>Viburnum prunifolium</i>		5 (7 gallon)
Walnut, Black	<i>Juglans nigra</i>	10	
Willow, Black	<i>Salix nigra</i>		32 (3 gallon)
Willow, Pussy	<i>Salix discolor</i>		20 (3 gallon)
TOTAL TREES PLANTED		600 bare root & 2 large sycamore (10 years old)	482 trees installed
Required by grant		380	460

Allen County, Indiana ~ RBI III Project Locations



June 18, 2016



Source: Esri, DigitalGlobe, GeoEye, Earthstar Geographics, CNES/Airbus DS, USDA, USGS, AEX, Getmapping, Aerogrid, IGN, IGP, swisstopo, and the GIS User Community
Esri, HERE, DeLorme, MapmyIndia, © OpenStreetMap contributors, and the GIS user community

RBI III Specific Project Locations

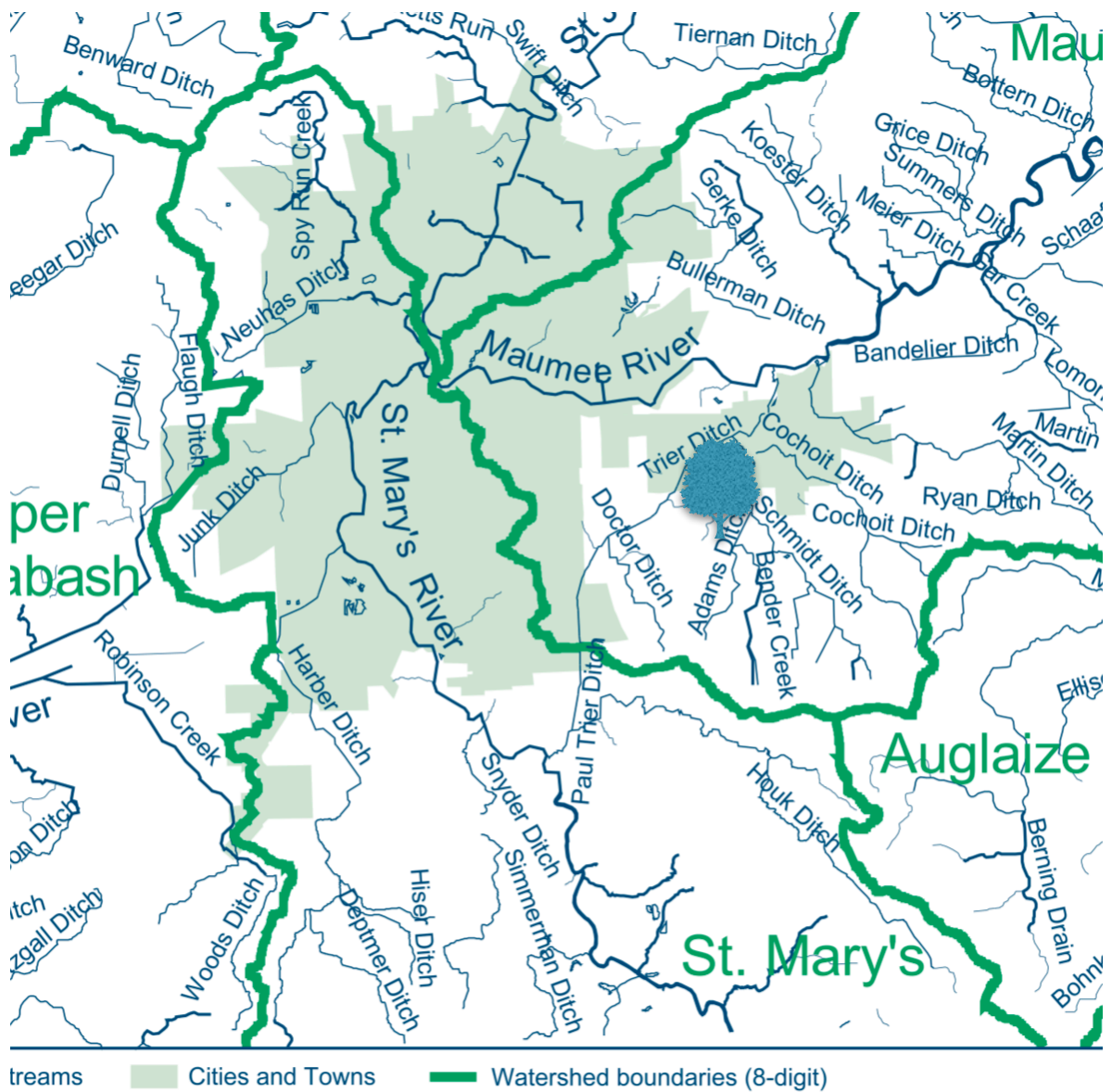


Figure 2: Major watersheds of Allen County.

Photo Credit: Water Resources of Allen County, Purdue Extension Cooperative Services. By Jane R. Frankenberger, Extension Agricultural Engineer

* Trier Subwatershed HUC12: 041000050101
Trier Subwatershed HUC14: 04100005010030



*Site 1 physical address 4325 Meyer Rd. Fort Wayne, IN 46806 (RBI III), behind Gunsallus Industrial Service, owned by Hartzell Reality, Jerome Henry

*Site 2 physical address 4615 Ellenwood Dr. Fort Wayne, IN 46806, South of Ellenwood Dr, west of Meyer Rd., owned by Martin Realty, Gerald Martin



Thank you for time in assessing our project. All the information in this report is accurate to my knowledge. Save Maumee appreciates your support of Save Maumee's Riparian Buffer Initiative. Should you need any more information, please do not hesitate to contact me.

Respectfully submitted by,

A handwritten signature in black ink, which appears to read "Abigail King". The signature is fluid and cursive.

Abigail King
Save Maumee Grassroots Organization Founder & President
Save Maumee Riparian Buffer Initiative Manager

260-417-2500
abby@SaveMaumee.Org

This research was conducted in cooperation with the USDA Forest Service. Grant recipients of The USDA Forest Service and EPA have responsibilities to conduct their programs according to USDA's nondiscrimination policy. Save Maumee, the USDA and the EPA are equal opportunity providers, employers and lenders. Full Civil Rights Disclosure here: <http://savemaumee.org/civil-rights-nondiscriminatory-policy/>